



# **TIGHT LINES**

## **June 2024 Newsletter**

### **of the**

## **Rabun Chapter (522) Trout Unlimited**

The mission of the Rabun Chapter of Trout Unlimited is to conserve, protect, and restore Northeast Georgia's coldwater fisheries and

[CLICK HERE](#)

to visit our website!



## **June, 2024 Rabun Chapter Meeting**

**Tuesday, June 18**

### ***Casting and Cold Cuts!***

To be held at the Rabun County Park Day Use Picnic Shelter,  
400 Rabun Park Drive, Tiger, GA

Fellowship, meeting, and meal starts at 6:00 pm,

Casting instructions and games starts at 7:00 pm.

Back by popular demand: "Casting and Cold Cuts!" returns for our June chapter meeting. We had so much fun last fall that we're doing it again this spring. Rabun TU members and guests are invited to gather at Rabun County Park on Tuesday evening, June 18, for food, fellowship, and fly casting. We have rented the two pondside picnic shelters from 6 to 8PM.

We'll have a brief update from Prez Tammy and a supper of sandwiches, chips, and drinks provided by the chapter. After that, perfect your fly casting skills at the pond or try out the casting games set up by VP Trey on the lawn. Bring your own rod or borrow one of the dozen from the chapter and Shady Creek Outfitters. If you're new, get a free casting lesson from a veteran Rabunite!

Just bring a lawn chair, bug spray, and a smile. Of course, extra desserts are always welcomed, too. Invite a friend who might be interested in joining our chapter. RSVP's are not required, but will help Jeff to buy enough vittles. Email him at [jeffdurniak@yahoo.com](mailto:jeffdurniak@yahoo.com) if you can.

The park is on the east side of Hwy 441 just south of the High School, at 400 Rabun County Park Drive, Tiger, 30576. Come and enjoy some Rabunite fun on June 18!

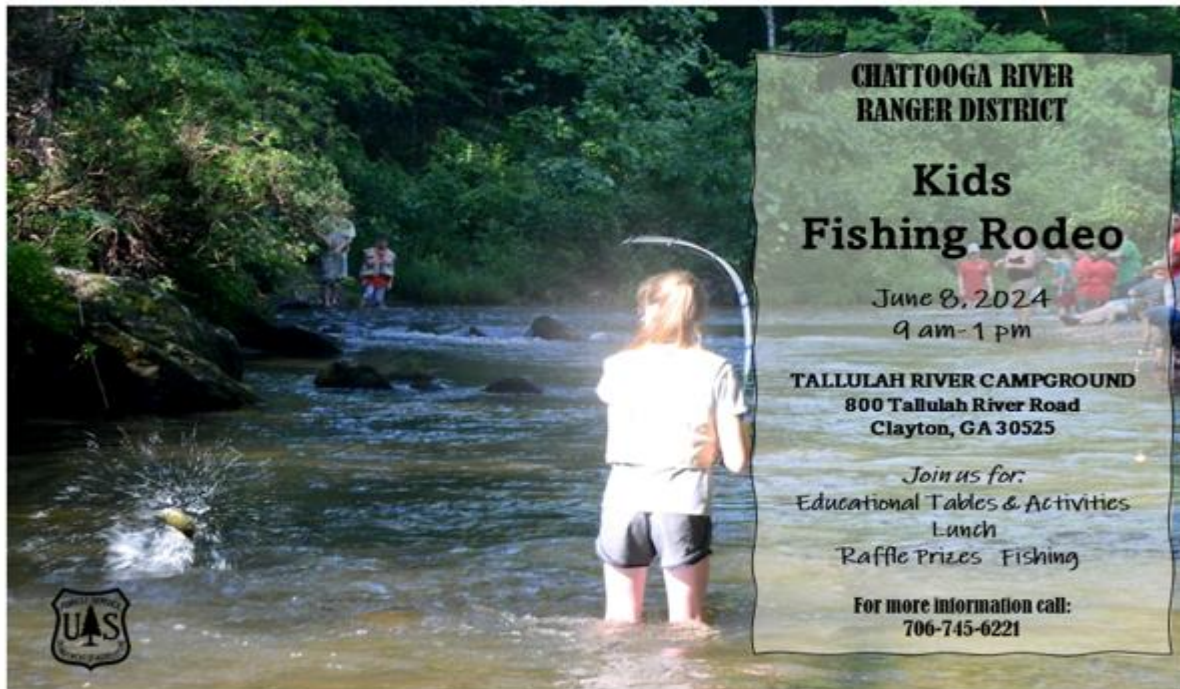
## **Important Upcoming Dates Mark Your Calendars Now!**

- Sunday, June 2 - Friday, June 7. **Georgia Trout Camp.** Tallulah Falls School, Tallulah Falls, GA. Sponsored by the GA Council Trout Unlimited. [CLICK HERE](#) for more information.
- Saturday, June 8. **Tallulah River Kids Fishing Event.** Meet at Tallulah River Campground. 9:00 am - 12:00pm. See page 2 or contact [Frank Patton](#) to volunteer to help.
- Saturday, June 15. **GA Council Quarterly Meeting.** Anyone can attend. 9:00 am at the Family Connection Center, Blue Ridge, GA. Contact [Tammy Hopton](#) for more information.
- Tuesday, June 18. **Monthly Chapter Meeting.** Day Use Pavilion at the Rabun County Park. Fellowship, meeting, and meal starts at 6:00 pm, casting and games starts at 7:00 pm. See page 1 or contact [Tammy Hopton](#) for more information.
- Sunday, June 23. **Celebration of Life for Monte Seehorn.** Lake Pavilion, Vogel State Park. Starts at 3:00 pm. See page 4 for more information.
- Tuesday, June 25. **Monthly Chapter Board of Directors Meeting.** Rabun Gap Presbyterian Church Fellowship Hall. Starts at 7:00 pm. Anyone can attend. Contact [Tammy Hopton](#) for more information.
- Tuesday, July 16. **Annual Rabun Chapter Family Picnic.** This will be our monthly Chapter meeting. Hamburgers and hot dogs provided by the chapter, please bring a covered dish. Tallulah Gorge State Park Picnic Pavilion in Day Use Area, Tallulah Falls, GA. Contact [Tammy Hopton](#) for more information.
- Tuesday, July 23. **Monthly Chapter Board of Directors Meeting.** Rabun Gap Presbyterian Church Fellowship Hall. Starts at 7:00 pm. Anyone can attend. Contact [Tammy Hopton](#) for more information.
- **No Chapter activities in the month of August.**
- Saturday, Aug 3. **Holcomb Creek Stream Conservation Project.** Sponsored by the US Forest Service and GA DNR to be conducted with local Boy Scout Troop 6. [CLICK HERE](#) for more information.
- Tuesday, September 17. **Annual Chattooga River Electroshock Sampling.** Location and time TBA. Rain date September 24. Contact [Tammy Hopton](#) for more information.

*Continued next page*

## Important Upcoming Dates Mark Your Calendars Now!

- Monday, November 11 - Sunday, November 17. **Annual Rabun Chapter Fall Campout.** [Oconee State Park](#), Mountain Rest, SC. Make your own campsite reservations. We will use Site #93 as our gathering place for meals and fellowship. Contact [Terry Rivers](#) for more information.
- Tuesday, December 17. **Annual Rabun Chapter Christmas Dinner.** Location TBA.
- Saturday, Jan 25, 2025. **38th Annual Rabun Rendezvous.** Dillard House Conference Center, Dillard, GA. [CLICK HERE](#) for more information.
- Friday, January 31—Sunday, February 2, 2025. **Atlanta Fly Fishing Show.** Gas South Convention Center, Duluth, GA. [CLICK HERE](#) for more information.



### Rabun Chapter has a Third Member Attending the 2024 Trout Camp!

The Rabun Chapter has a third member attending the 2024 Georgia Trout Camp: Sydney Crouch. Sydney is 13 years old and is the granddaughter of Chapter member Dave Crouch from Turnerville, GA. While Sydney is a Rabun Chapter member, she is being sponsored by the Coosa Valley Chapter.

Congratulations, Sydney!



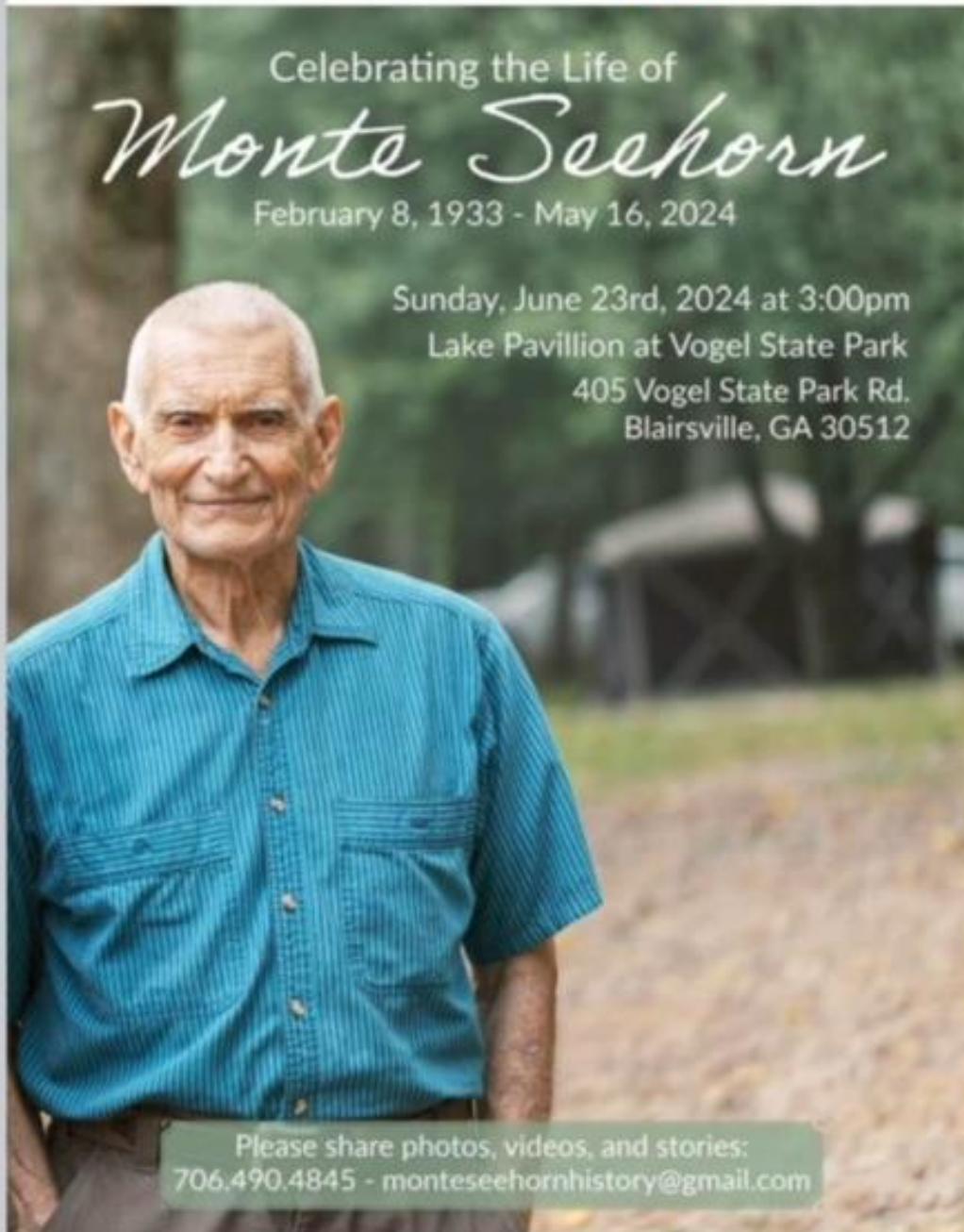


Kathy Seehorn Lee is with Monte E. Seehorn.

2d · 🌐



If you knew my dad, please come join us!! ❤️❤️



**Editor's Note:** Monte Seehorn was a legendary figure among lovers of trout in the Southeastern US. His career as a fisheries biologist with the US Forest Service spanned several states over many years. He had multiple papers published and was instrumental in designing many of the stream structures that we construct today. Monte has had a long history with the Rabun Chapter TU: he has been a member and supporter of our Chapter since our inception, he has presented several monthly program topics and he led many conservation projects. His son, Terry, continues to be a valued member of our Chapter. Monte will be sorely missed. [Monte Ellison Seehorn Obituary 2024 - W R Strickland & Sons Funeral Home \(wrstricklandandsonsfuneralhome.com\)](https://www.wrstricklandandsonsfuneralhome.com/obituary/monte-ellison-seehorn-2024)



## **Rabun Chapter Trout Unlimited Fundraiser**

### **Mack Martin Custom Built Fly Rod & TFO Reel Sweepstakes**

**Winston 9', 4-piece, 4 wt. AIR-2 Boron/Graphite Rod with Carbon Fiber Rod Tube**

**TFO NTR Reel with Wulff TT 4-Weight Line with 100 yards 20 lb Backing**

**Raffle tickets are \$3.00 each or four (4) for \$10.00**

**Purchase tickets here: <https://go.tulocalevents.org/d0bd07/Campaign/Details>**

**Drawing will be held at the July 16, 2024 Rabun TU Chapter picnic**



**Thank You, Mack, for your generous donation!**



# Report from the Reed Creek Stream Conservation Project

May 16, 2024

A large contingent of Rabunites were joined by students from the University of Georgia Parks and Recreation class, along with members of the GA Foothills, Gold Rush and Chattooga River Chapters, for the stream conservation workday on Reed Creek. There, under the leadership of the US Forest Service and GA Department of Natural Resources, we constructed several new large stream structures, a few smaller ones, and refurbished some old ones built in the late 1980's.

A lot of good work was done and the FS and DNR folks were pleased with the turnout, the safe work practices, and the great attitudes of everyone involved. Everyone went home tired and happy.

[\(10\) Facebook](#)



## Report from the May Monthly Chapter Meeting

### Hot Dogs and Fishing at “The River”

**May 21, 2024**

There was fellowship and good eats, followed by some Dark Thirty magic fishing afterwards, at Burrells Ford for our annual hot dog cookout.

The after-dinner fishing group found rising trout and an abundance of mayflies and caddis flying about. A gorgeous, bright full moon almost made our headlamps optional for the walk out.

Many thanks to Kathy and Charlie Breithaupt for organizing, setting up and grilling, and to all the Chapter members who brought smiles and side dishes.





## **Fishing Reports**

### **Last Day of Nantahala Delayed Harvest Season**

**By Nanette O'Hara**

Ken Kellerman, Dredger, and Rick and I had a successful send off to the Delayed Harvest season, catching fish on nymphs in late afternoon and a variety of small dries as the shadows got longer and the light faded.

I should add that Dredger dispensed wisdom, flies and fish-catching advice to our trio since he is still recovering from a medical procedure and not able to fish yet.





## **Fishing Reports**

### **Damn Near West of Hiawassee**

#### **By Peter Croes**

First and foremost, I would like to apologize to Kathy and Charlie for missing their annual Burrells Ford Hot Dog Soiree. I had every intention of making it there after my blue line fishing trip with Wes McElroy scheduled for earlier the same day. You will remember that Wes presented the program at our April chapter meeting. I soon booked a blue line trip with him through Unicoi Outfitters. Here's my report of that fishing trip, and then maybe you will understand why I did not make it to the cookout.

Wes guided me on -wet wading- the upper Hiawassee system in the Swallow creek WMA fishing for native trout. Once we arrived at our takeout point, I went to the rear of the Jeep and began putting on my stone guards and rubber soled Orvis boots while my guide took my rod case and began assembling my McFarland Spruce Creek 3wt 6' 9" fiberglass rod (which I had made with the inscription Hic Gratia Dei (look that one up) following my last bout with cancer. Small creek/stream fishing has been my favorite trout fishing for over sixty-five years and one I cut my teeth on in the Smokies. We were the only ones there and as far as I was concerned even Google Search could not find us!

Here's an initial view upstream from our entry point. The further upstream we traveled the more challenging it became; felled trees, overhanging rhododendrons, slippery rocks, deep holes; dual shin slides stopped only by rocks against them (I'm still hurting a week later). I had a couple of good saves where the rubber soles didn't hold as well as advertised. And one unexpected slide resulting in damn near total emersion save my hat! It was a good thing Wes had doubled back for my wading stick as this creek made Rough Butt in the Smokies look like a cake walk.

While fishing for these native trout ninety nine percent of the day they preferred the prince nymph dropper; however, the only problem was some of them could not get their mouths open wide enough to take the barbless hook; and, it seemed at other times you had to do a hook set before they bit or they were there and gone when you realized that you had a strike; the trout were 2" to 4" wild rainbows although the average size was about 5" with one nearly 8"! Most of these trout were manifestly colored that even talented wildlife artists like Broderick would have trouble duplicating those patterns.

The wet wading in the crystal-clear pure Hiwassee headwaters was a trip of a lifetime for this old man, especially with an enthlasia and professional guide like Wes. At times we had 6 to 7' of line out plus an appropriate leader; other times 1' and Rabunite high-stickin; and even utilizing bow and arrow casts for the really tight areas.

*Continued next page*

## Fishing Reports, continued

If you are interested in a similar trip you should call Unicoi Outfitters in Helen and try to get on his schedule . . . before the water becomes too warm which could harm/endanger those magnificent creatures' life.

Although this was not technically wilderness, I'll say it was due to its natural undisturbed scenic beauty. While traveling upstream we came across this tree with what I will call a fungal growth and had to enclose a picture here simply because of its beauty and growth density and enormity. Looking at the tree from the water to its sheared top 50' or so this bracketed fungus grew toward the sky almost like steps going toward the heavens.

We saw, and occasionally caught, these native rainbow trout, from the moment we stepped into this stream until the spot where we exited the creek/stream; I realized again that I was truly here by the Grace of God!







GEORGIA WILDLIFE FEDERATION  
*Keeping Georgia Wild*

February 29, 2024

Trout Unlimited  
Ms. Tammy Hopton  
P.O. Box 371  
Clayton, GA 30525

Dear Ms. Hopton,

On behalf of the Georgia Wildlife Federation Board of Directors, thank you so much for your \$250.00 donation on January 16, 2024, to the Georgia Wildlife Federation (GWF).

GWF is committed to making everyone in Georgia aware of the fact that safe drinking water, clean air, abundant fish and wildlife, as well as other outdoor resources cannot be taken for granted. Our goal is to educate the public as to how they can help to conserve our natural resources and your contribution can help us fund that goal.

Together we can make a difference in *Keeping Georgia Wild*.

Sincerely,

Mike Worley  
President & CEO

Note: Please retain this letter as proof of your contribution to the Georgia Wildlife Federation. Please consult your individual tax advisor to determine if your contribution is tax deductible. GWF is a 501 (c) (3) tax exempt organization. FEI 58-0676737

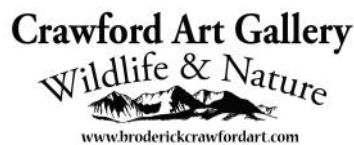
*Thank you very much Tammy. I appreciate  
the partnership with you and with TU!*

*See ya soon,  
Mike*

Dear Friends at Trout Unlimited,

Thank you for your generous donation to Black Rock Mountain's Fishing Rodeo. We had over 60 children attend and luckily the rain held off long enough for everyone to enjoy themselves. Each child received a goody bag containing fishing supplies, flash lites and hats. Thanks again for your support. Les Martin Friends of BRM SP

**Click on the Images and Visit the Websites of our Sponsors**



**Thank you, Sponsors! We appreciate your support of the Rabun Chapter!**  
**All donations to Rabun TU (a Federal Tax Exempt 501(c)3 non-profit) are tax deductible.**



## JUNE Hatch Chart

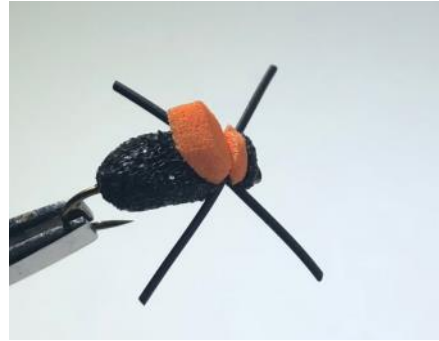
<u>The Bugs</u>	<u>Time of Month</u>	<u>Time of Day</u>	<u>Suggested Flies</u>
None at all	All Month	All Day	Dredging Nymphs:12-16 Prince, Hare's Ear, Zugbug, Pheasant Tail
Green, Brown Caddis	Early	L pm	12-14 Dark Elk Hair Caddis w/ Green 12-14 Dun & Green Caddis Pupa
Speckled Grey Caddis	Early	L pm	12-14 Grey Elk Hair Caddis w/ Green 12-14 Dun & Yellow Caddis Pupa
Small Dun Caddis	All month	Mid am	18 Brown Elk Hair Caddis w/ Green 18 Grey Caddis Pupa
Giant Black Stonefly	All Month	E am	4-8 Black Stonefly Nymph
Brown Stonefly	All Month	E to mid am	10-12 Brown Stonefly Nymph
Light Cahill Mayfly	Late	E to L pm	12-14 Light Cahill 12-14 Light Cahill Nymph
Trico Mayfly	Mid-Late	Mid am	20 Parachute Trico
Trico Spinner Fall	Mid-Late	Late am	20-22 Polywing Black Spinner
Midges	All month	All day	18-20 Griffiths Gnat 18-20 Midge Pupa
Terrestrial	All month	All day	Ants, beetles, crickets, inch worms, etc.

**"In our family, there was no clear line between religion and fly fishing. We lived at the junction of great trout rivers in western Montana, and our father was a Presbyterian minister and a fly fisherman who tied his own flies and taught others. He told us about Christ's disciples being fishermen, and we were to assume, as my brother and I did, that all first-class fishermen on the Sea of Galilee were fly fishermen and that John, the favorite, was a dry-fly fisherman."**

**~by Norman Fitzroy Maclean, A River Runs Through It**

## Fly of the Month

By Terry Rivers



### Foam Beetle

**HOOK:** Dry Fly Hook #12

**BODY:** Peacock Herl

**BACK:** Foam Rubber

**LEGS:** Medium Leg Material

**POST:** Orange Foam

GREAT FLY TO HAVE DURING THE SUMMER MONTHS WHEN OTHER PATTERNS HAVE SLOWED DOWN.

*SEE YOU ON "THE RIVER"! TERRY*

## You are Invited to Join Trout Unlimited!

[CLICK HERE](#) to go to the membership page of Trout Unlimited. Once you join, TU will assign you to the nearest Chapter according to your Zip Code. If you wish to be a member of the Rabun Chapter regardless of your Zip Code, specify Chapter 522 in your application.

## Rabun Chapter Membership Update

One new member this month: John Reynolds from Clayton, GA. *Welcome, John!*

Current Chapter membership: 168 adult members and 3 youth members.

## Rabun Chapter Leadership Contacts

### Voting Leaders

[Tammy Hopton](#)

[Trey McFalls](#)

[Ray King](#)

[David Ruth](#)

[Jeff Durniak](#)

[Ray King](#)

[Steve Perry](#)

[Mike Anderson](#)

[Rick O'Hara](#)

[Ken Kellerman](#)

Chapter President

Chapter Vice President

Treasurer

Secretary

Past President

Fundraising Chair

Director thru 03/25

Director thru 03/26

Director thru 03/27

Director thru 03/28

### Non-Voting Leaders

[Jerry McFalls](#)

[Pat Hopton](#)

[Pat Hopton](#)

[Nannete O'Hara](#)

Scouts Liaison

Tight Lines Editor

Memorials

Social Media Chair



## ***Prez Notes***

Moving into Summer, I already miss Spring. I think it always goes by too fast. The Rabun Chapter has been busy: trying new meeting places, Rabunite 101, Hot Dogs and Fishing by “The River”, Reed Creek Stream Project are all just a few of the things we managed to accomplish.

We are able to provide many of these events due to our dedicated members. I reviewed some of our Chapter Leaders in last month newsletter. Well this month I want to give a shout out to some other very vital members.

Charlie and Kathy Breithaupt. What a power house couple they are! They are the driving force behind Rabunite 101, the Hot Dogs by the River and Trout Camp, among others! They are effective planners, organizers and gatherers of talent! I am convinced they can do anything they put their minds to.

After talking with Charlie and Kathy about some of their endeavors over the years, the one thing that stuck with me is how important it is to establish relationships with others. Whether it is government agencies or Tallulah Falls School, it is important to build meaningful relationships that includes clear purpose and trust.

Charlie and Kathy do a wonderful job of identifying needs in our TU community. But they then they don’t just sit back. They take action. No matter how big the task is, they always excel in reaching them.

I am always learning and Charlie and Kathy have taught me a lot by their actions and steady dedication. I am using these lessons in my journey as being your Chapter Prez.

So from me personally, and I’m sure from all of you too, here is a huge THANK YOU! to both Charlie and Kathy Breithaupt!

***Prez Tammy***

