



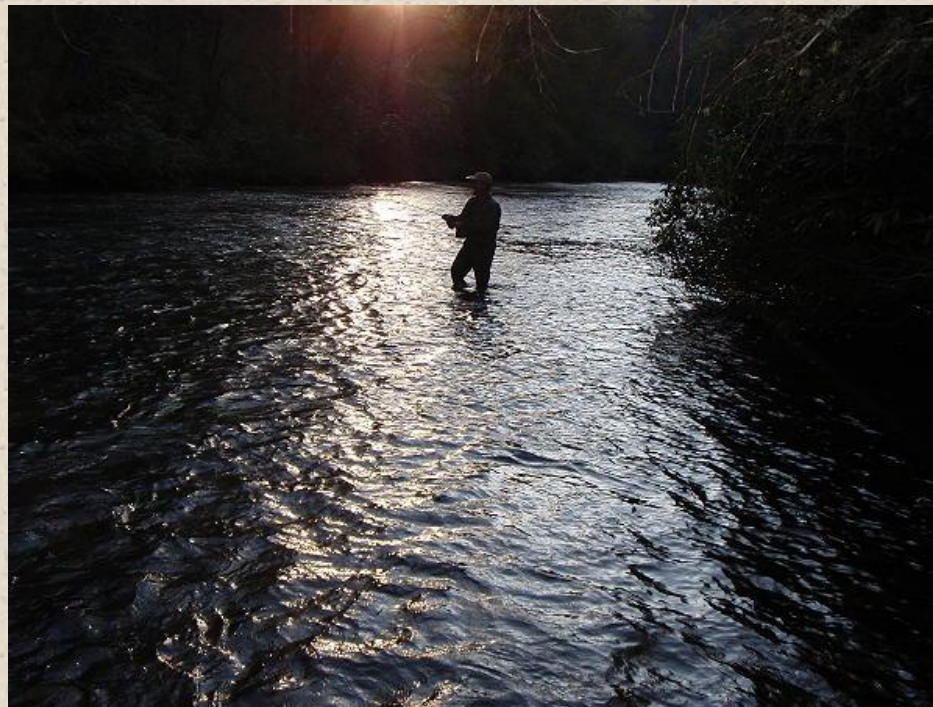
Dark Thirty Fishing

Pat Hopton

Dark Thirty Addict and Chapter Prez

What is “Dark Thirty Fishing”?

- Late evening to after dark fishing.
- In spring, this would be beginning about 7:30 pm and ending around 9:00 pm.



But wait! Is this even legal??

GA trout fishing regulations state that

Trout Fishing Hours

- Fishing hours on seasonal trout streams, except Waters Creek, are 30 minutes before sunrise to 30 minutes after sunset. Night fishing is not allowed.
- Fishing 24 hours a day is allowed on **year-round trout streams**, except those in next paragraph, and on all impoundments on trout streams, except Dockery and Rock Creek lakes.

Why Fish Dark Thirty?

Low Fishing Pressure



This is the time of day when Brown Trout start moving and feeding

Diel Movement of Brown Trout in a Southern Appalachian River

DAVID B. BUNNELL, JR., AND J. JEFFERY ISELY

*U.S. Geological Survey, Biological Resources Division
South Carolina Cooperative Fish and Wildlife Research Unit
Department of Aquaculture, Fisheries, and Wildlife, Clemson University,
Clemson, South Carolina 29634, USA*

KYLE H. BURRELL AND DAVID H. VAN LEAR

*Department of Forest Resources, Clemson University
Clemson, South Carolina 29634, USA*

Radio telemetry was used to monitor the diel movement of 22 brown trout *Salmo trutta* (268–446 mm in total length, TL) in the Chattooga River watershed. Forty-seven diel tracks, locating individuals once per hour for 24 consecutive hours, were collected for four consecutive seasons.

Brown trout were more likely to occur in pool habitat independent of season or period of the day. Hourly movement patterns differed among seasons. During the winter and fall, trout moved only around sunrise; during the spring, they moved around sunrise, **sunset, and intermittently throughout the night.**

*Insect activity increases at dark thirty, which
increases trout feeding*



Yellow Sally and Golden Stonefly



Caddis Flies



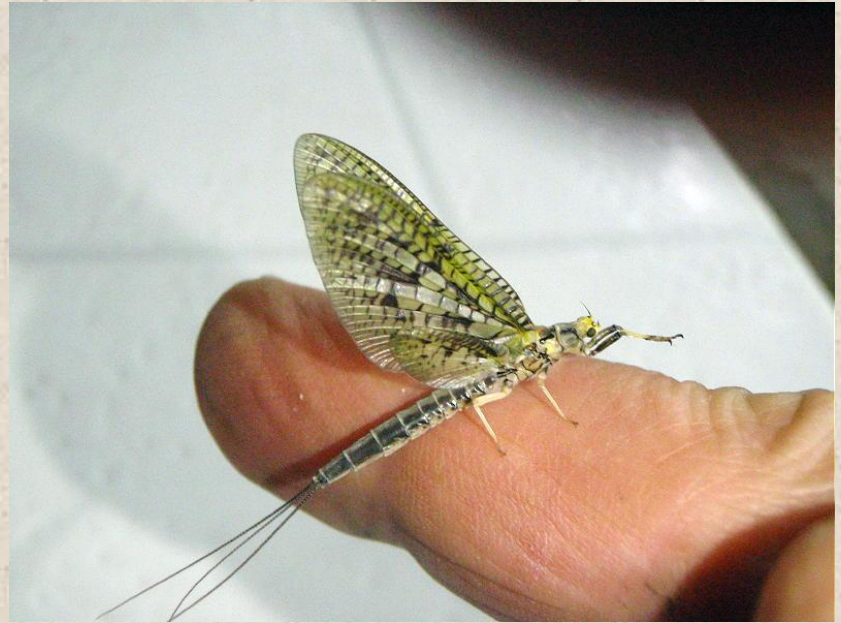
Light Cahill and Sulphur Mayflies



Red Quill Mayflies



Brown and Slate Drake Mayflies



Green Drake Mayflies Yee Haa!!





Be there for the coffin fly spinner fall!!

When to Fish Dark Thirty

It's most effective in the spring of the year...

- Daylight has increased to 10-12 hours per day
- Water temperatures are 56-66 degrees.
- Water levels are moderate
- Insect activity is at it's peak for the year
- NOW IS THE TIME TO GO!



Where to Fish at Dark Thirty?

- The Chattooga River can't be beat for Dark Thirty fishing!

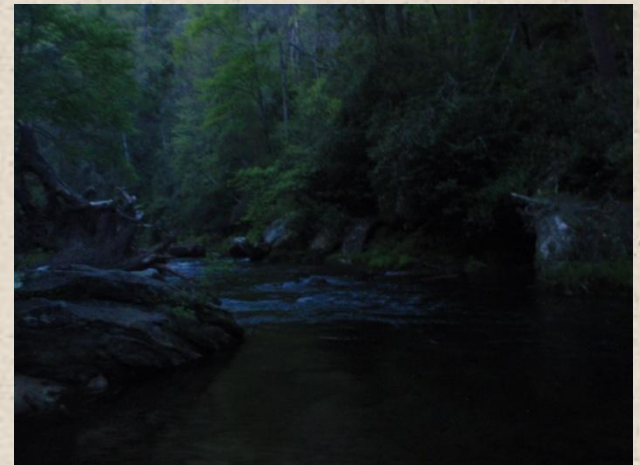
Delayed Harvest

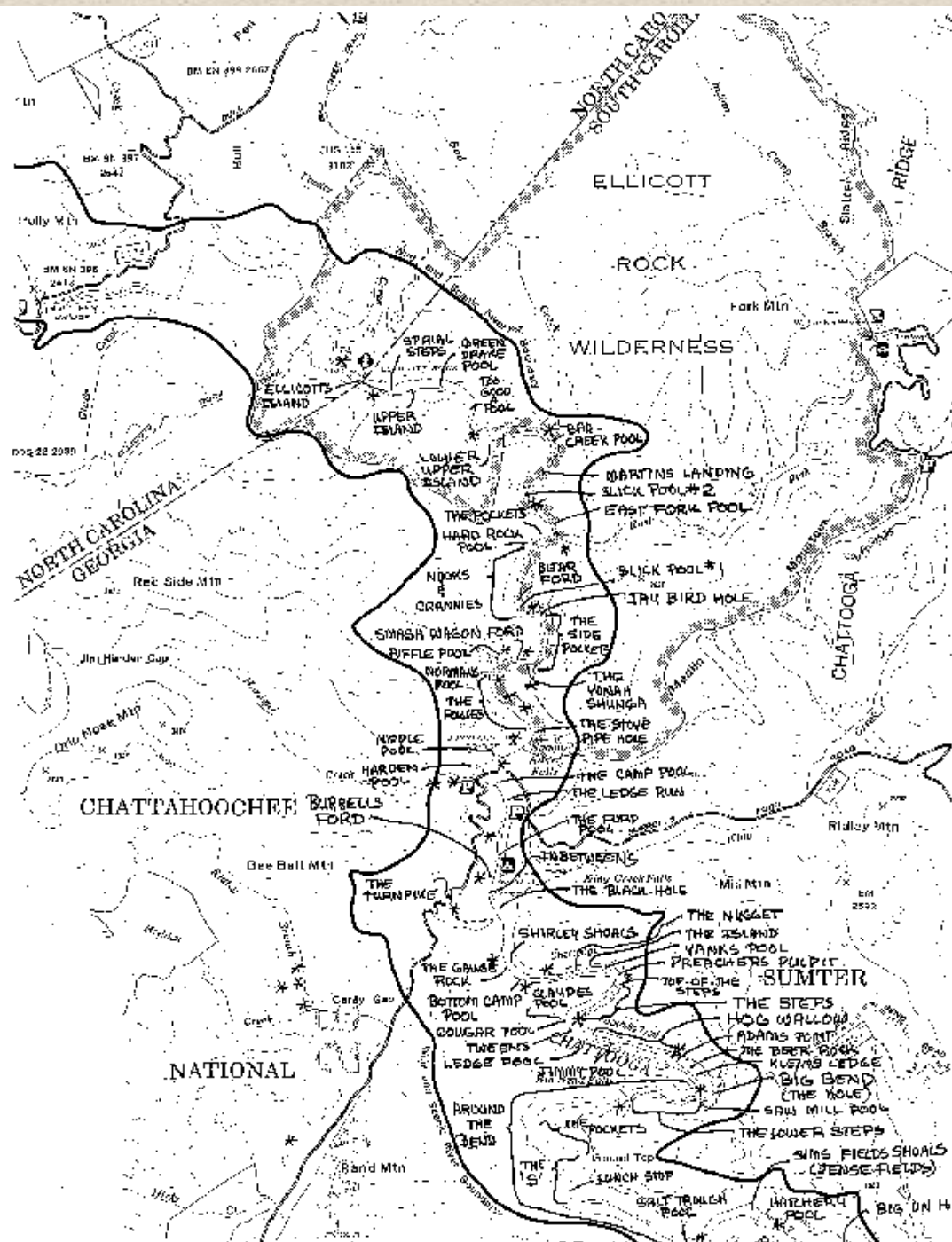
Middle Backcountry

Burrells Ford Front Country

Upper Backcountry

- Others?





How to Fish Dark Thirty

- Have the right equipment

Flashlights! Used to walk out in the dark

- Be safety conscious

Take a buddy or let someone know where you'll be fishing

- Be comfortable

Dress appropriately

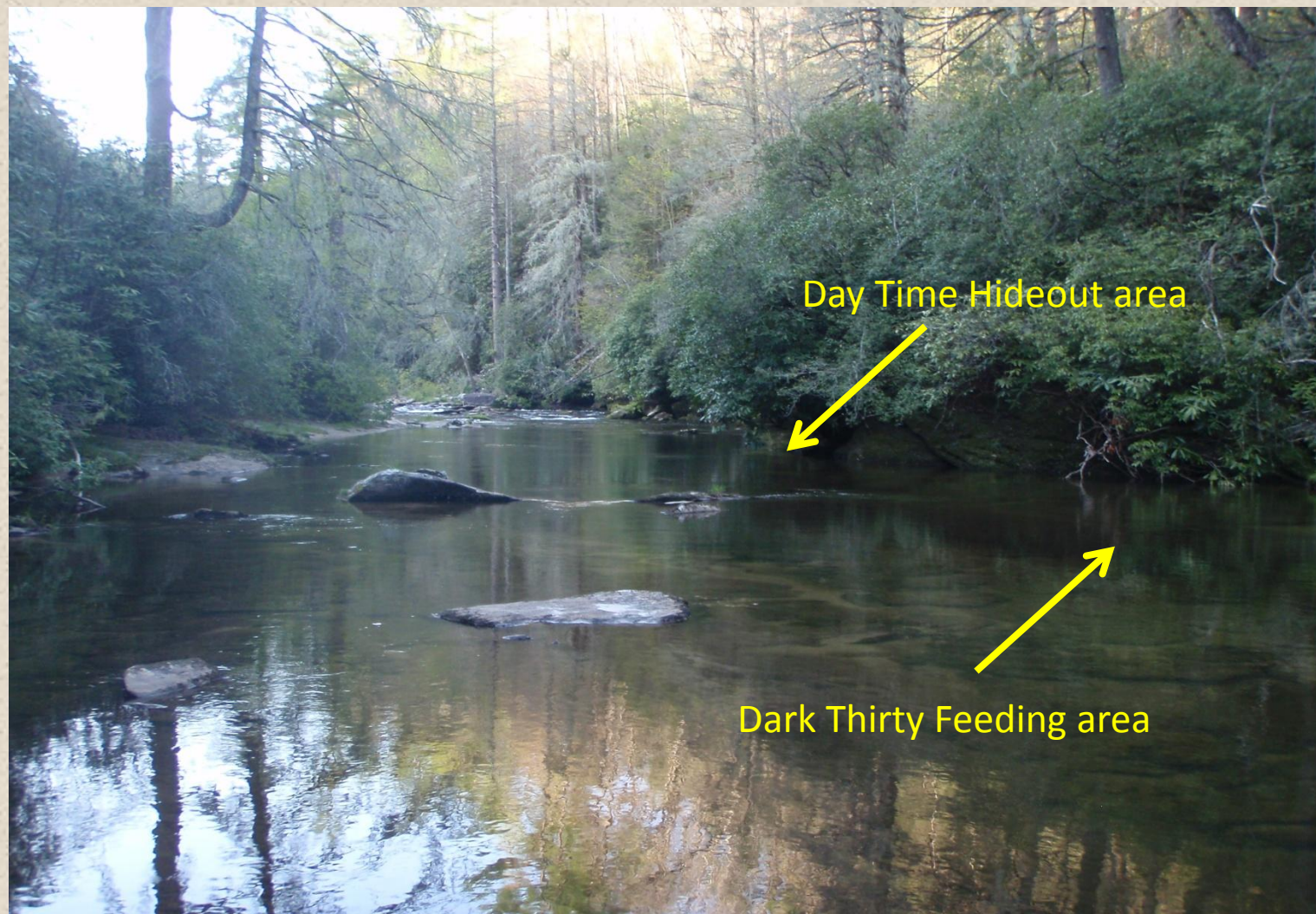
Have food, water



- Fish where the fish are...

The tail-outs of pools after dark!





Day Time Hideout area

Dark Thirty Feeding area

- Get into position while there is still light.
- Make a few casts to gauge distances, overhanging branches, backcast hazards, etc.
- Now wait! As it gets dark, watch for riseforms in the reflections of the water.
- Listen for rises... subtle splashes to commode flushes.
- Don't be tempted to use a headlight. Use the ambient light or moonlight that is available. Let your eyes adjust.

- If you have to re-tie knots or tie on a new fly, turn away from the river to use your headlight. Avoid shining the light across the water. Let your eyes re-adjust when finished.
- Having trouble seeing your fly? Here's some tips:
 - Don't try to see your fly at all times. Just mentally gauge where your fly is at and set the hook any time you either see or hear a rise near where you think your fly is.
 - Often a larger or lighter color fly will work just as well.

- Try using two flies: one large, more visible fly with a trailing fly that more closely imitates the insect you are trying to match. Set the hook any time you see or hear a rise near the larger fly.
- A bright yellow yarn-type strike indicator can be used to help detect strikes. Again, set the hook any time you see or hear a rise near your strike indicator.
- Often some action on the drift of the fly will entice strikes. Skittering a fly on the surface with a fairly tight line can be used to help in feel strikes.

- Make every cast your first cast. Don't flog the water.
- Slow down. Fish like a heron. Dark Thirty fishing is all about catching that quality fish... it's not about numbers of fish.
- Like any other tactic, practice makes perfect.



Fishing at Dark Thirty can seem uncomfortable and frustrating at first, but keep at it. You will soon find that your senses of feel, sight and hearing will increase to compensate for the low level light conditions.

Yee Haa!!!!





Questions?

