



# TIGHT LINES February 2009 Newsletter of the

## Rabun Chapter (522) of Trout Unlimited

Editor – Doug Adams [edadams1@alltel.net](mailto:edadams1@alltel.net)  
Visit the Rabun TU website: <http://www.rabuntu.com/>

*"What an unveiling of the heart it is, when the angler is alone with God and nature."* Thaddeus Norris



*"Fly fishing is solitary, contemplative, misanthropic, scientific in some hands, poetic in others, and laced with conflicting aesthetic considerations. It is not even clear if catching fish is actually the point."*  
From Dances with Trout by John Gierach, (1994)

### "FORWARD CASTING" Important Dates – See you there!

**Jan 20 (Tues) Chapter Meeting** 6:30 PM, Community B&T, **Program** Jimmy Harris – *"Madison, The Other RIVER"*

**Jan 24 (Sat) 22<sup>nd</sup> Annual Rabun Rendezvous;** Dillard House Conference Center; 5 PM Social, 6:30 PM Dinner. **Program presented by Noel Holcomb,** Commissioner of the Georgia Department of Natural Resources.

**Feb 3 (Tues) 23<sup>rd</sup> Annual Chattooga Coalition Meeting** 9 AM in USFS office in Franklin, NC

**Feb 7 (Sat) Annual Chapter Planning Meeting** 8 AM Breakfast at Dillard House, All members are invited.

**Feb 17 (Tues) Chapter Meeting** 6:30 PM, Community B&T, **Program:** Jim Kidd *"Getting our share of LWCF funds"*

**Feb 24 (Tues) BOD Meeting,** 6:30 PM, Community B&T.

**Mar 7 (Sat) GA TU Council Meeting,** 9 AM in Dahlenega

**Mar 17 (Tues) Chapter Meeting** 6:30 PM, Community B&T, **Program:** Mike Crane – *"Implementing the new Chattooga North Fork management plan"*

**Mar 21 (Sat) Hoot on the Hooch** with drawing for the 2008 Dream Trip! For details, visit <http://georgiafoothills.org/>

**Mar 24 (Tues) BOD Meeting,** 6:30 PM, Community B&T.

**Mar 28 (Sat) AM Opening Day for Seasonal Trout Streams in GA**

**Mar 28 (Sat) PM Satolah Fire Department Bluegrass & Bar-B-Q**

**2009 Rabunite 101** (1/2-day fly-fishing workshop) – Sat. AM, April 4<sup>th</sup>

**2009 GA Trout Camp;** June 7<sup>th</sup> – 12<sup>th</sup>

Volunteer mentors needed for both

### FLY OF THE MONTH

by Terry Rivers



**BRASSIE**

WELL WE ARE SURELY GLAD TO GET THE RECENT RAINS, BUT WE STILL NEED MORE. THIS IS ONE OF THE EASIEST FLIES TO TIE; IT IS A GREAT "GO TO FLY" FOR A DROPPER BEHIND A DRY FLY OR A STRIKE INDICATOR. HAVE A FEW OF THEM TIED IN VARIOUS SIZES IN YOUR FLY BOX. WHEN TROUT ARE SIPPING FLIE'S JUST BELOW THE SURFACE, TIE ONE OF THESE BEHIND A DRY FLY ABOUT 3 FT. AND LET YOUR FLY LINE SWING DOWN STREAM TILL YOUR FLY CAN EMERGE TOWARD THE SUFACE AND GET READY FOR THE STRIKE.

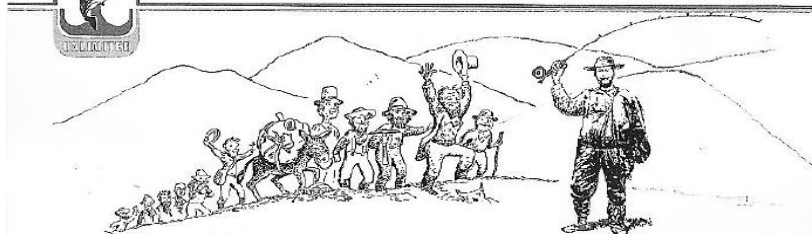
**HOOK:** 14 TO 18

**BODY:** COPPER WIRE

**THORAX:** PEACOCK HERL OR PEACOCK DUBBING

*"In all fly-fishing, the wet and the dry, we are constantly learning something, and this we fancy is the secret of the infinite charm which the sport possesses. If the trout will not take your dry fly, try a wet fly, or wet the dry one. If they fail to appreciate the wet dry fly, skim or bob your dropper fly. Try every known method, but always stick to the artificial fly."*

Louis Rhead



**The Rabun Chapter of Trout Unlimited proudly presents  
A Celebration Of Rivers, Streams, Trout, and Trout Fishing**

**Please Join Us for the 22<sup>nd</sup> Annual  
Rabun Rendezvous**

*"The Rendezvous was unlike anything before or since, a gathering of uninhibited men down from the mountains. The event attracted perhaps a hundred mountain men, their indian wives, and assorted visiting tribesmen. Amusements included gambling, drinking, storytelling – continuing day and night." Quote from The Mountain Men by George Laycock*

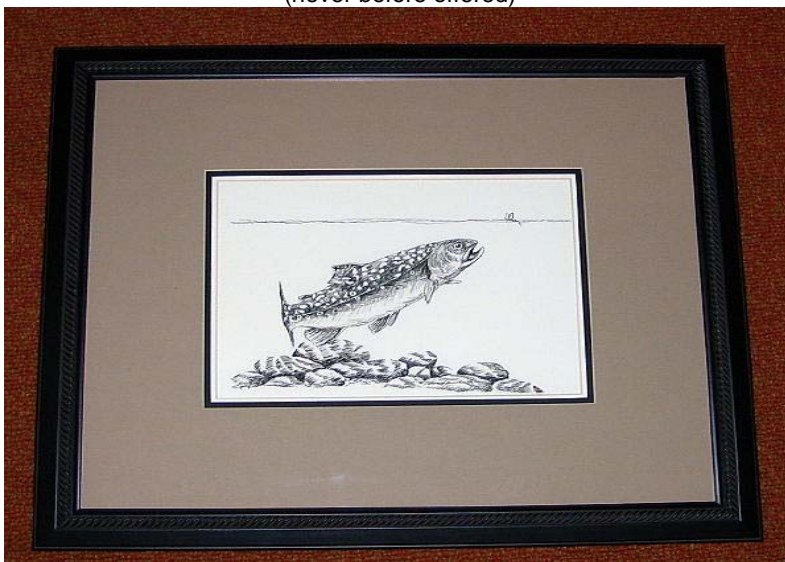
**When: Saturday, January 24, 2009 Where: The "NEW" Dillard House Conference Center (doubled in size), located behind the Dillard House in Dillard, Georgia.**

**Cost:** \$30 for adults and \$25 for youth of 15 and under. Cash or personal checks are fine (this is the first year we will also be able to accept VISA & MasterCard credit cards). We don't do advanced tickets or reservation; just pay at the door.

5 PM Social, 6:30 PM Dinner

**Program presenter will be Noel Holcomb**, Commissioner of the Georgia Department of Natural Resources.

**There will be a special auction for the below framed 'pen & ink' Tom Landreth original: "Brook Trout".**  
(never before offered)



All the proceeds from sale of this striking original will be donated to the Georgia "[Back the Brookie](#)" program in Tom's memory.

For more details about the Rendezvous , click [HERE](#) or E-mail [edadams1@alltel.net](mailto:edadams1@alltel.net) ;

For lodging call toll Free 1-800-541-0671 Mention you are coming to the **Trout Unlimited Rendezvous** for the best rates.

**Request to the Rabunites and Friends**

With the budget crunch faced by the agencies (the US Forest Service and GA WRD), Trout Unlimited can step-up in 2009 and be the lead financial partner in protecting, preserving, and enhancing the coldwater resources in Northeast Georgia, including the "Back the Brookie" activities (see above). The Rabun Chapter's major fundraiser of the year, the Rabun Rendezvous, is coming soon. Now is a good time to ask friends and supporters for donations of goods and services for the bucket raffle and silent auction.

Need an idea what you can donate?

Art & crafts (fishing flies, wood working, sewing, knitting items) and goodies from the kitchens of the Rabunites (cakes, breads, baskets with canned veggies, jams, jellies and preserves) have always been popular with our guests.

## February Hatches

The Bugs	Time of Month	Time of Day	Suggested Flies
None at all	All Month	All Day	Dredging Nymphs: 12-16 Prince, Hare's Ear, Zugbug, PT
Winter Black Stone	All Month	L am to M pm	18-20 Black Elk-hair Caddis or Griffith's Gnat 16-18 Black Stone Nymph or Pheasant Tail Nymph
Small Dun Caddis	Late	L am to M pm	18 Brown Elk-hair or Deer-hair Caddis 18 Hair's Ear Nymph
Blue Winged Olive & Blue Quill	Late	L am to M pm	16-18 BWO, Blue Quill or Adams Parachute 16-18 BWO Nymph or Pheasant Tail Nymph
Quill Gordon	Late	L am to M pm	12-14 Quill Gordon 12 Quill Gordon Nymph
Midges	All Month	All Day	18-22 Griffith's Gnat 18-22 Midge Pupa

**'Website-of-the-Month':** <http://www.midcurrent.com/articles/flyfishingknots.aspx>

### Stekoa Creek Update

**Stekoa Creek Monitoring - A National Trout Unlimited "Embrace-A-Stream" Project in 2007 & 2008** [HERE](#) Stekoa Creek is classified as primary trout water, and should be capable of supporting trout reproduction. Stekoa Creek is also infamous as a very polluted tributary to the National Wild & Scenic Chattooga River. The City of Clayton is entirely in the Stekoa Creek watershed.

#### DRIVING FOR TROUT

Nineteen (19) members of Rabun TU have volunteered their time and vehicle expenses to drive the weekly Stekoa Creek Monitoring water samples to the certified lab in Jefferson, GA (132 mile round trip). The samples are collected by trained employees of the Chattooga Conservancy and transferred (by a chain-of-custody procedure) to a TU volunteer in the parking area at the Stekoa Creek Trading Co. on Tuesday mornings at 10:30 AM.

The volunteer schedule through the winter is as follows: **Eedee Adams** (1/20); **Bill Kelly** (1/27); **Travis Barnes** (2/3); **Tom Matthews** (2/10); **Fritz Vinson** (2/17); **Doug Adams** (2/24); & **Kathy Breithaupt** (3/3).

**If you can volunteer to be a driver** of samples to the lab, contact Doug Adams, Ph 706 746 2158; E-mail [edadams1@alltel.net](mailto:edadams1@alltel.net)

**To view the lab results for the Stekoa Creek Monitoring water samples, click [HERE](#)**

**Want to help with the Stekoa monitoring?** The 2008 Trout Unlimited Embrace-A-Stream grant pays for about 60% of the lab fees. Matching donations are needed for the other 40%. For info on where you or your organization can send a donation to help pay lab fees E-mail [edadams1@alltel.net](mailto:edadams1@alltel.net) . All donations to Rabun TU (a Federal Tax Exempt 501(c) 3 non-profit) are tax deductible.

### Letters To the Rabunites

**Sent:** Tuesday, December 16, 2008

**Subject:** Print

It is with great pleasure that we accepted your donation of a Tom Landreth Print; know the value you placed on Tom and his work. Although we did not have a full house partly due to the eminent weather that night and the season, we were able to announce the auction in advance. We had some bids on line and in person for a final sale at \$110. This will be put to good use for our work in the future. Please thank your membership for their wonderful gift and most of all thank June Landreth for her kind generosity it has not gone without notice.

**From:** Ken Bachman, President – Chattahoochee-Nantahala TU Chapter, Blairsville, GA

**Editor's notes:** *Rabun TU donated the framed LE Tom Landreth signed and numbered print "Nantahala" to be use as a fundraiser to advance the TU mission. The donation was made in appreciation of support and in memory of Tom.*

**Sent:** Wednesday, December 17, 2008

**Subject:** Re: TIGHT LINES January 2009 Newsletter

Thanks for the recent edition of Tight Lines. I applaud the work you are doing to clean up Stekoa Creek. Merry Christmas to you and all the Rabun TU members.

**From:** Lucy Bartlett – Rabun Co, GA

**Sent:** Friday, December 26, 2008

**Subject:** Fwd: questions for "Ask Dr. Trout"

Hi folks, as some of you know I'm now doing a monthly question and answer column for American Angler Magazine called "Ask Dr. Trout". The success of this type of column depends on the quality of the questions, so it would be great if you could send me a question or three on trout biology, trout fishing or trout management. Thanks and have a happy New Years. cheers, g2

**From:** Gary D. Grossman, PhD - Distinguished Research Professor - Animal Ecology

E-mail [grossman@uga.edu](mailto:grossman@uga.edu) Website: <http://grossman.myweb.uga.edu/> Warnell School of Forestry & Natural Resources, University of Georgia, Athens, GA, USA 30602

**Sent:** Sunday, December 28, 2008

**Subject:** Tom Landreth print

Greetings, I wanted to let you know about the print you so kindly donated to our Chapter. We held a raffle at our annual Christmas Banquet and raised \$300. Bill Summer was our lucky member that won the wonderful print. Thanks again for such a great donation!

**From:** Ronny Cooper – President, Coosa Valley Chapter of Trout Unlimited, Rome. GA

**Editor's notes:** Rabun TU donated the framed LE Tom Landreth signed and numbered print "Rainbow Trout" to be use as a fundraiser to advance the TU mission. The donation was made in appreciation of support and in memory of Tom.

**Sent:** Monday, December 29, 2008

**Subject:** Re: TIGHT LINES newsletter

Thanks. This is a great publication that you put together.

**From:** Dan Forster – Director, Wildlife Resources Division, GA DNR, Social Circle, GA

**Date:** 12/29/2008 by US Postal

**To:** Rabun Chapter of Trout Unlimited

Head of Tennessee Baptist Church expresses appreciation for your gift to the Roy Kelly Memorial Fund, in memory of Jean Kelly. An acknowledgement of your tribute has been sent to Bill Kelly.

**From:** Head of Tennessee Baptist Church – Dillard, GA

**Editor's notes:** Jean was a charter member of Rabun TU. The Rabun TU Board of Directors authorized the donation.

**Date:** Wednesday, January 7, 2009

**Subject:** Hemlock woolly adelgid meeting

This success is to make you and your organization aware of a meeting we have planned for February 4<sup>th</sup> at North Georgia College and State University. The purpose of the meeting is to relay the latest information on the hemlock woolly adelgid (HWA) with an emphasis on the current situation in Georgia. As you may know, HWA is an exotic insect having a serious impact on Georgia's eastern and Carolina hemlocks with the potential to eliminate the species. I certainly hope that you and/or some of your representatives can attend. The attachment includes a registration form that should be detached and sent to NGCSU as instructed. The facility will accommodate around 100 people so prompt registration is encouraged.

I look forward to seeing you all there. Please feel free to forward this message or post the announcement on your website. Let me know if you have any questions. Sincerely,

**From:** Scott Griffin - Forest Health Specialist, Georgia Forestry Commission [sgriffin@GFC.STATE.GA.US](mailto:sgriffin@GFC.STATE.GA.US)

If you have a comment or an opinion to share with the readers of TIGHT LINES, please submit it in 250 words or less to [edadams1@alltel.net](mailto:edadams1@alltel.net)

## Status Update – Chattooga North Fork Visitor Use Capacity Analysis

<http://www.fs.fed.us/r8/fms/>

The draft EA public comment period closed on August 18<sup>th</sup>. Almost 3000 public comments on the draft EA were received. Two-thirds of the comments called for protecting the values of solitude and remoteness of the upper Chattooga and one-third of the comments were for unrestricted year-round, any water-level boating access on the upper Chattooga. The E-mailed comments can be read by clicking [HERE](#). The final decision will be released in 2009, click [HERE](#)

### What's New Elsewhere?

#### NPS - Fight brewing over mountain bikes in National Parks

The National Park Service is considering whether to lift the ban on mountain bikes on trails in National Parks. The controversial plan would overturn a two-decades-old ban on trail riding in National Parks. The proposal on the table would not open the door to mountain bikes carte blanche, but rather gives each park the option of allowing mountain bikes after going through its own environmental review. The Interior Department officials reportedly are working to make it easier to expand mountain bike access to backcountry trails in the park system.

Hikers and environmentalists are infuriated at a new plan to allow mountain bikes on hiking trails in National Parks across the country. According to the nonprofit Public Employees for Environmental Responsibility (PEER), mountain biking on trails can cause erosion, damage native plants and disturb other trail users, and as such has no place in the country's National Parks. The group is trying to marshal public support against the plan.

There is currently a 60-day comment period that expires in mid-February. Those on both sides of the issue have been gearing up for a fight, with fast and furious action alerts being sent out by groups like the American Hiking Society and the International Mountain Biking Association (IMBA) to its members.

Just three years ago IMBA said it simply wanted mountain bike access to dirt roads in National Parks. Then in January of 2006, Jenn Dice, IMBA's government relations director, told a member of the [Coalition of National Park Service Retirees](#) that IMBA's members want access to single-track trails in the parks because a majority of the membership finds dirt roads "boring and mind-numbing, and not the kind of fun they are looking for." In fact,

IMBA's official stance when it comes to developing mountain bike tourism is that "single-track is essential."

Here's what IMBA's web site has to say about single-track trails: "Mountain bikers crave single-track and designing interconnecting single-track trails will bring them in droves." As for the organization's thoughts on Wilderness (which is out-of-bounds for mechanized vehicles), while IMBA supports Wilderness designations, it also [believes](#) "mountain biking, a low-impact, muscle-powered recreation, is an appropriate trail use on public lands and is consistent with the values of Wilderness land protection, which includes recreation in natural landscapes. When proposed Wilderness Areas include significant mountain biking opportunities, IMBA pursues boundary adjustments and alternative land designations that protect natural areas while preserving bicycle access. IMBA can support new Wilderness designations where they don't close single-track bicycling opportunities."

To read more, click [HERE](#), [HERE](#), [HERE](#), [HERE](#) or [HERE](#)

**Editor's notes:** Recreational conflict - mountain bikers and hikers on the same narrow trails. This is another example for the necessity of recreational zoning. Zoning of public recreational lands and waters is absolutely necessary now and in the future, particularly as recreational demands on limited public lands and waters increase. Zoning ensures that different and conflicting types of users are physically separated. Zoning is a time tested, fair, and legal land and water management practice. Zoning of conflicting activities is good stewardship.

The following are excerpts from an article by Bob Marshall, Dec. 2008/January 2009 Issue of "Field & Stream"

#### "Why Johnny Won't Hunt"

Rampant urbanization, changed cultural values, and the new American religions of organized sports and electronic entertainment are keeping kids out of the woods. But our eroding commitment could be the fatal blow. "Hunters are the

most willing to give their own dollars for wildlife conservation," says Mike Checkett of Ducks Unlimited. "But if we do not engage today's youth in our hunting heritage and traditions, the future of both hunting and conservation looks grim."

Hunting's vital signs continue the steady decline that began in the 1970s, according to a wave of research released this year. A new U.S. Fish and Wildlife Service survey shows that our total numbers are down: just 12.5 million, dropping half a million in the last five years alone. Our average age is up: 24 percent of us are over 55, whereas only 12 percent of us are under 25. Recruitment is failing: 38 percent fewer newcomers joined our ranks in the last 15 years. And the proportion of Americans who hunt has dropped to 3 percent, a figure guaranteed to shrink as the general population continues to expand.

**Less Land, Less Opportunity:** It all goes back to that shift from farms to cities. **A Fatal Time Share:** Hunting today faces much stiffer competition for the attention and loyalty of young people than it did 30 years ago. **A Conscious Decision Not to Hunt:** This query addresses the point that, in most cases, the reason a hunter leaves the sport—and takes potential future generations with him—is that he's made a choice not to hunt. To read more, click [HERE](#)  
**Editor's notes:** *Like hunting, if we do not engage today's youth in our fishing heritage and traditions, cold water fisheries conservation will suffer in the future.*

# # #

### Alumni of 2007 GA Trout Camp receives prestigious "Super Hero" environmental award

Fifteen-year-old Mitchell Hardman of Rabun County and Athens, GA had on his Christmas list something a bit unique--solar panels. In December the young environmentalist was named an "Eco Super Hero" for his commitment to sustainable energy.

Ted Turner's Captain Planet Foundation (CPF) gives the award. The mission of the CPF (click [HERE](#) ) is to support hands-on environmental projects for youth in grades K-12. The foundation's objective is to encourage innovative programs that

enable children and youth around the world to work individually and collectively as environmental stewards. Through ongoing education, CPF believes that children can play a vital role in preserving our precious natural resources for future generations.

When Mitchell spoke with Atlanta's public broadcasting radio station WABE's Jim Burress, he said his fascination with science goes back to a very early age.

#### Congratulations, Mitchell.

To hear Mitchell's radio interview, click [HERE](#)

# # #

### USFS-GA New Fisheries Biologist for the Chattahoochee-Oconee National Forest

Michael Joyce, Zone Fishery Biologist on the Huron-Manistee National Forest in Michigan, has accepted the Forest Fishery Biologist position vacated by Mitzi Cole in 2008. Mike's reporting date is early March. **Welcome South, Michael.**

# # #

### USFS-GA New Wildlife Technician for Chattooga River Ranger District

David Vinson, Rabun County native, has been promoted to District Wildlife Technician filling the vacancy left when Doug Watson retired 3 years ago. David graduated from Rabun County High School and the University of Georgia with 2 degrees. He has been working on the District in recreation. Many of you will remember David; in past years he has worked on several projects alongside the Rabunites. **Congratulations, David.**

# # #

### National TU Action Alert - The Public Lands Management Act of 2009 (1/9/2009)

As early as Sunday, January 11, the US Senate will consider and vote on a major package of public lands bills. This package contains over 100 bills, Check it out, click [http://dpc.senate.gov/dpc-new.cfm?doc\\_name=lb-111-1-1](http://dpc.senate.gov/dpc-new.cfm?doc_name=lb-111-1-1) If the Senate passes the package, then the U.S. House of Representatives will need to hold a floor vote before sending it onto the President. The package includes *The Chattahoochee Trace National Heritage Corridor Study Act of 2007* (S. 637), would direct the Secretary of the Interior to study the suitability and feasibility of establishing the Chattahoochee Trace National

Heritage Corridor in Alabama and Georgia AND *The Wyoming Range Legacy Act* (S. 2229), would protect 1.2 million acres in Wyoming's Bridger-Teton National Forest from new oil and gas leasing. The legislation has been crafted to allow for existing energy development to continue by way of directional drilling into the Wyoming Range, minimizing impacts to wildlife habitat and the Grey's River watershed. To see a "You Tube" video, click <http://www.youtube.com/watch?v=n992EofYEX4> To read more, click [HERE](#) You decide if you want to support it or not, click [HERE](#)

# # #

### National TU Announces new TU SE land protection staff position (1/9/2009)

Arlington, VA We wanted to let you know about some great news for TU in the Southeast, specifically the states of North Carolina, South Carolina, Georgia, Tennessee, and southern Virginia. In December, we received funding from the Thoreson Foundation to hire a Land Protection Coordinator in this region. The coordinator will be our second staff person under the Eastern Lands Protection Project -- Nat Gillespie, who runs the program, being the first. The position will be focused on developing partnerships between the land trust community and TU councils, chapters, and other sportsmen's groups to protect

and restore Eastern brook trout and other coldwater fisheries across the region.

Please E-mail [EMaclin@tu.org](mailto:EMaclin@tu.org) for more information -- and feel free to forward it along to TU chapter leaders as well as any potential candidates. We will keep you posted as we move forward with the hiring process. And will also be contacting you again soon to solicit your input on this new program and to learn about existing partnerships between TU and SE land trusts. In the mean time feel free to email or call with any questions.

Best regards, Elizabeth Maclin - Vice President for Eastern Conservation, Trout Unlimited

# # #

## "BACKCASTING"

**Jan 3 (Sat) Jean Kelly Memorial Service** - An overflow crowd attended the service for this beloved Rabun TU charter member. The service was in the sanctuary of the Head of Tennessee Baptist Church, Dillard, GA. As she instructed, Bill will spread a portion of her ashes in Wyoming.

**Jan 6 (Wed) BOD Meeting at Dillard Conference Center** - 6 members met to work on details of the arrangement and layout for the Rendezvous in the newly enlarged facility. We also met with the BancCard representative to set up for the use of VISA & MasterCard at the 2009 Rabun Rendezvous.

**“BACKCASTING”** (continued) **Jan 13 (Tues) BOD Meeting** with 11 members in attendance. The agenda included: **Trout Camp Alumni Ben Houston** loss all possession when his home burned in December. Donations from Rabunites needed to replace his fishing gear.

**Recaps - GA TU Council Meeting Annual planning meeting and Christmas Dinner**

**Rabun Rendezvous Details:**

- a) Advanced Sales (\$540) & 5 Cash Donations (\$1,300) = \$1,840. The \$1,000 Wal\*Mart donation has been sent to National for the Board Match Campaign.
- b) Motel reservations are down. Economy concerns? E-mail Rendezvous notice to local friends??
- c) Raffle and auction items: Are there any additional donations (items) to pickup?
- d) Indian Frank's teepee – It was a big hit last year, Call Frank and ask?
- e) Additional tables – Number needed about 10 or 12 (local or rental?)
- f) Name badges & cards to reserve places
- g) Review agenda for the event (see attachment)
- h) Duty Volunteers Needed: Set-up: starts 1 PM; Silent Auction: (Tom always did this, Larry did it last year) arrangement of items, bid sheet descriptions, pencils, etc; Bucket Raffle: Doug & Amanda; Check-in at Entrance Door: (start at 4 PM to 7:00, 3 one hour shifts, 5 volunteers/shift), responsible for cashbox, etc ; Take up meal tickets at head of Buffet Line (Kathy & Sandy?); Introduction of speaker: Larry Walker; Bucket runners to podium; Silent auction sheet collectors and help buyers locate items (4 volunteers needed); Volunteers needed to collect silent auctions funds; and the Clean-up & takedown.

**Updates – State Budget and the Burton Hatchery; Dream Trip Raffle ticket sales; Rabun TU - Sponsor 2 Kids for 2009 Trout Camp; Spring Rod Raffle, 9 ft - 4 wt- 4 piece; 2009 Rabunite 101 & Publicity**

**Chapter Meeting Programs - Jan 20** , Jimmy Harris – *Madison, The Other RIVER*; **Feb 17** – Jim Kidd – *Getting Georgia's fair share of LWCF & Mar 17* - Mike Crane - *Implementing new Chattooga North Fork Management Plan*

**Feb 7 (Sat) Annual Planning Meeting.**

**Treasury Reports: Checking and CDs; GA Trout Camp Needs Addition Funding & Tom Landreth Memorial Fund.**

---

## **Dream Trip Raffle for a 2009 Fly Fishing Vacation for a Twosome!**

**The winner and their partner will each receive:**

- 5 days fishing with Guide Butch Martin and 6 nights lodging and meals at the Green River Guest Ranch in Cora, WY Click [HERE](#)
- Dates July 25 – 31, 2009**
- 9 ft 5 wt Winston Boron II X custom made fly rod
  - An Orvis Battenkill barstock reel with line
- A fly box and flies for the trip. (Approx. 5-7 dozen per box)
- \$1,000 in travel expenses (this is total, not per person)

For complete rules and details visit [www.georgiatu.org](http://www.georgiatu.org)

Runner up prizes will include custom made fly rods, fishing trips, and boxes of flies.

Winner will be drawn at the Georgia Foothills Chapter of Trout Unlimited annual banquet the “Hoot on the Hooch” in Helen, GA on March 21, 2009. One winner will be drawn and the winner will choose a partner to accompany them on the trip. Several other winners will be drawn for the runner up prizes which include; custom made rods, fishing trips and flies. The seller of the winning ticket will also receive a prize. Ticket price is \$10 and proceeds will go to the Georgia Council of Trout Unlimited to help fund Council projects and the Back the Brookie campaign that helps brook trout restoration and educational projects.

**Contact Prez Jimmy Whiten for your raffle tickets:** Ph 706 886 6546 E-mail [jimmywhiten@nctv.com](mailto:jimmywhiten@nctv.com)

---



**Rabunite Quote-of-the-Month: "Gotta love rain and pink chenille....." by Dredger**

Our "THANKS" to **Robert Soens** (Decatur, GA) and **Russ Tyre** (St. Petersburg, FL), a Rabun TU member, for your cash donations to the Rabun TU Chapter to advance our mission to protect, preserve and enhance trout fisheries in NE Georgia.

All donations to Rabun TU (a Federal Tax Exempt 501(c)3 non-profit) are tax deductible.

**Now is the time to begin the application process for Georgia Trout Camp 2009.**

Think - your kids, grandkids, nieces and nephews, neighbor's kids, or any kid that is excited about the outdoors and fishing.



(Click logo for more info)

**Rabun Chapter will sponsor 2 campers. Here are a few facts and instructions:**

**Camp Dates:** June 7 (Sunday) - June 12 (Friday); **Cost:** \$400 per camper; **Deadline to apply:** February 28, 2009

Includes room, board, and all activities for the five-day camp.

**Instructions:** Applications must be completed and turned in to Rabun Chapter 2/28/2009.

Rabun Chapter will select 2 campers from the applicants to sponsor by 3/24/2009.

(Campers must be within the ages of 12 – 15 at time of camp)

Each of the 12 chapters in Georgia has two spots to fill and each chapter decides how they want to select their campers. Once a chapter chooses a camper, the application, along with their tuition check, is forwarded to the Trout Camp Coordinator (Charlie Breithaupt). Campers will be notified of their acceptance as soon as possible. Later, around early May, more detailed information will be sent to each camper. Information and application forms are available on the Council website <http://georgiatu.org/>

Questions and/or concerns should be directed to the Camp Coordinator.

Charlie Breithaupt; 194 Kitchins Lane; Clayton, GA 30525 [knc615@windstream.net](mailto:knc615@windstream.net) (706) 782-6954

### **Some Very Sad News**

**Ben Sanders**, retired USFS wildlife biologist, old friend of the Rabunites, and Associate Member of Klondike Enterprises, is gravely ill. Early last week Ben was released from the hospital to his Gainesville home, and hospice was called in to provide care - no further treatment could be provided for his condition. Apparently Ben has been battling some form of cancer for the past year.

Then on Friday, Ben's wife, Mary Lee, died suddenly of an aneurysm and her funeral was on Sunday (1/11). Obituary [HERE](#)

Some folks will recall that Ben presented the program at the 7<sup>th</sup> Annual Rabun Rendezvous in 1994.

## **MEMBERSHIP UPDATE**

Thanks for re-upping: **Lea Richmond, Mike Williams, Travis Barnes, David Lash, and Terry Seehorn.**

It is time to renew your membership: **Steve Denman, Danny Cox, Rick Hires, Tracy McCoy, Pom Sinnock, Patsy Gentry, Logan Justice, and Tyler Kearns.**

Rabun TU has 69 memberships in Rabun County (43%)

Rabun TU has 68 memberships from other Counties in GA (43%)

Rabun TU has 22 out of state memberships (14%)

### **Rabun TU Officers & Directors for F/Y2009**

**President - Jimmy Whiten**, PO BOX 881, TOCCOA GA 30577-1414

**Vice President** (w/Notices in newspaper) - **Larry Walker**

**Treasurer** (w/Newsletter & Meeting Raffles) - **Doug Adams**

**Secretary** (w/Communications) - **Doug Mansfield**

**Past President** (w/ Campouts & Rod Raffle) - **Terry Rivers**

**Director** (w/Programs) - **Bill Kelly**

**Director** (w/Website) - **Kathy Breithaupt**

**Director** (w/Education) - **Charlie Breithaupt**

**Director** **Ray Gentry**

**Director** **Ray Kearns**

Ph 706 886 6546

Ph 706 244 4345

Ph 706 746 2158

Ph 706 896 7445

Ph 706 782 7419

Ph 706 746 2104

Ph 706 782 6954

Ph 706 782 6954

Ph 404 680 6736

Ph 706 782 9913

E-mail [jimmywhiten@nctv.com](mailto:jimmywhiten@nctv.com)

E-mail [amosndixie@alltel.net](mailto:amosndixie@alltel.net)

E-mail [edadams1@alltel.net](mailto:edadams1@alltel.net)

E-mail [mansfpd@alltel.net](mailto:mansfpd@alltel.net)

E-mail [tr1121@alltel.net](mailto:tr1121@alltel.net)

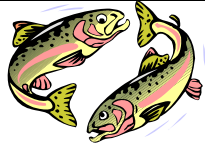
E-mail [bkik1@alltel.net](mailto:bkik1@alltel.net)

E-mail [knc615@windstream.net](mailto:knc615@windstream.net)

E-mail [knc615@windstream.net](mailto:knc615@windstream.net)

E-mail [regentry@alltel.net](mailto:regentry@alltel.net)

E-mail [raykearns@alltel.net](mailto:raykearns@alltel.net)



### From the Fly Tying Desk of Jimmy Whiten

Saturday (Jan 2nd) was a cool, cloudy day with some drizzling rain as I attended a memorial service for my friend, Jean Kelly. It was a bittersweet day for me, knowing that Jean was in a better place without any suffering but I will miss her, as will her family and many friends. As I listened to different ones tell pleasant stories about Jean they were only echoing some of the things I knew about this special person. Her concern was always helping someone else, never about herself. As we came out of the church the sun was shining and as I came down the steps I was wondering when another one of my friends or me would take this same journey. All I know for sure is we are all one day closer (my God knows when).

As we lay 2008 to rest, we are well on our journey through 2009. As I sit at my desk, home alone (very quiet) thoughts flood my mind about the year 2008. WHAT IF I had taken more time off, spent more time with my friends, fished more, caught more fish, traveled lots more leisure miles, more camping and spent more time with my wife and daughter. WHOA - WHAT AM I THINKING? Just remove the word "more" (only 4 letters) and you see I had a great year.

January 24th is almost here, the day most of us have been waiting on all year, the RENDEZVOUS. Based on past history and plans it will be bigger and better than ever, a new larger building, lots of bluegrass music, silent auction (lots of items), a number of items to be raffled off, (items from sweets through flies and everything in between and maybe, just maybe a map of THE RIVER) and a first ever - a live auction of a Tom Landreth original pen and Ink, framed "Brook Trout."

This is an event for everyone, even the ones that care nothing about fishing. There will be lots of things for the non-fishing person, entertainment and food like you can only dream about and plenty of it. We'll see you at the Rendezvous.

Happy Fishing,

*Jimmy*

For more pictures, info, and back issues of TIGHT LINES, visit the Rabun TU website: <http://www.rabuntu.com/>

Georgia TU Council website: <http://georgiatu.org/> & National TU Website:

<http://www.tu.org/site/c.kkLRJ7MSKtH/b.3022897/k.BF82/Home.htm>

We would love getting your "Letters to the Editor", suggestions, stories, articles, and questions for our panel of experts, or your comments about our Website and Newsletter.

Send them to: [edadams1@alltel.net](mailto:edadams1@alltel.net) or to: Rabun TU, PO Box 65, Rabun Gap, GA 30568

Please tell us if you have E-mail, it will save the chapter \$1.26 per newsletter mailed:

E-Mail [edadams1@alltel.net](mailto:edadams1@alltel.net)

RABUN CHAPTER of TROUT UNLIMITED

PO BOX 371

CLAYTON, GA 30525