



# TIGHT LINES May 2010 Newsletter of the

## Rabun Chapter (522) of Trout Unlimited

Editor – Doug Adams [edadams1@windstream.net](mailto:edadams1@windstream.net)

Visit the Rabun TU website: <http://www.rabuntu.com/>

*"The wilderness and adventure that are in fishing still recommend it to me."* Henry David Thoreau

**THE MAY MEETING is the ANNUAL FAMILY COOKOUT!**  
with Mentoring of Girl & Boy Scouts Fishing the Lake. Passing it on!

**Place - Indian Lake Picnic Shelter on the Campus of RGNS – Rabun Gap, GA**

**Monday – May 17 4:00 pm – Fellowship & Lake Fishing 7:00 pm – Cook-out Meal**

(Directions – go north on US 441, turn left at the Rabun Gap Post Office, go ¼ mile & turn left, go ¼ mile & turn right, go to end of road)

**The Chapter will provide the hotdogs, hamburgers, drinks, plates, etc.**

**Everyone is asked to bring a covered dish, veggies, salad, chips, or a desert.**

**There will not be a raffle at the Family Cookout.**

*"Trout are not looking for something new and different to eat or do"* Arnold Gingrich

### **"FORWARD CASTING" Important Dates – See you there!**

**May 12–16 (Wed – Sun) Camping & Fishing** Chattooga Backcountry with Camping at Cherry Hill C.G. (with hot showers, flush toilets & tables) Nice place, great fishing & fellowship. Click [HERE](#) Location: Off SC Hwy 107, 1.5 mile south of Burrell's Ford Rd intersection. **You need to contact Bill Kelly or Terry Rivers** Ph 706 782 7419 E-mail [tlr1121@windstream.net](mailto:tlr1121@windstream.net). They plan the menu and buy the grub! The main course meal will be between 1pm/2pm. Supper you are on your own or we will have snacks &/or leftovers when you return from dark-30 fishing. Y'all come! Bring a friend! **Passing it on!** WAAAAAHWHOOOO!

**May 14&15 (Fri & Sat) SE Regional TU Rally** in Townsend, TN; Details [HERE](#)

**May 15 (Sat) Hi County Boil Fundraiser for Blue Ridge Mountain TU Chapter;** Details [HERE](#)

**May 17 (Mon) Annual Spring Family Cookout with Mentoring** 4 PM at Indian Lake with Boy &/or Girl Scout Troops as our guests. Note the change to Monday because this is the weekly meeting night for the Scouts. (For details – see box above) **Passing it on!**

**May 22 (Sat) GA TU Council Meeting:** 9 AM in Helen, GA

**May 25 (Tues) BOD Meeting** – The location will be streamside

**May 29 (Sat) Workday - Betty Creek In-Stream Trimming/Clean-up** meet 9 AM at Betty Creek. Volunteers needed. Bring loppers, saws, pole pruners, work gloves, waders, etc.

**June 5 & 6 (Fri & Sat) FFF Conclave** at Unicoi S.P.; Details [HERE](#)

**June 5 (Sat) Mentoring - Annual Kids Fishing Event,** 8 AM at Tallulah River with USFS & GA WRD. Volunteers needed. **Passing it on!**

**June 6 – 11 (Sun – Fri) 6<sup>th</sup> Annual GEORGIA TROUT CAMP** at RGNS. Volunteer mentors needed, click [HERE](#). **Passing it on!**

**June 15 (Tues) Chapter Meeting,** 6:30 PM, RE/MAX Office **Program** – Jim Kidd & Friends; *Little T smallmouth and Chattooga redeye*

**June 22 (Tues) BOD Meeting** 6:30 PM, RE/MAX Office

**June 26 (Sat) Rabun TU Stekoa Creek Clean-up Day.**

### **FLY OF THE MONTH**

by Terry Rivers



#### **COFFIN FLY**

THIS IS A GREAT FLY TO HAVE IN YOUR BOX AND BE ON THE WATER AT THE MOMENT THAT IT HAPPENS.

STAY TILL DARK-30 AND ENJOY. IT'S THE MOST EXCITING TIME OF THE YEAR WHEN THE BIG GREEN DRAKES DO THEIR DANCE

**HOOK:** # 10/12 DRY FLY 2 OR 3 X

**THREAD:** WHITE

**BODY:** WHITE POLY YARN

**TAIL:** MOOSE BODY HAIR

**RIB:** WHITE SADDLE CLIPED

**WING:** TEAL FLANK

**HACKLE:** SILVER BADGER

*"The tallest tale in fly-fishing is, as it should be, not about a fish but about a fly. Its name is the green drake. It is said to exist as an insect in nature, and so it does in the telling. The question, inescapable but never resolved, is whether the green drake is an imaginary being."*

John McDonald

## May Hatches

The Bugs	Time of Month	Time of Day	Suggested Flies
None at all	All Month	All Day	Dredging Nymphs: 12-16 Prince, Hare's Ear, Zugbug, PT
Cream Caddis	Early	M day to L pm	12-14 Elk Hair Caddis 12-14 Dark Cream Caddis Pupa
Small Dun Caddis	Early	L am to M pm	16-18 Gray Elk Hair or Deer Hair Caddis 16-18 Gray Caddis Pupa
March Brown Mayfly (Important)	Early	L am to M pm 10-14 March Brown Nymph, Dark Hare's Ear, or Pheasant Tail	12-14 Adams or March Brown Parachutes
Speckled Gray Caddis	All Month	M to L pm	12-14 Dark Elk Hair or Deer Hair Caddis 12-14 Dun & Yel/Brn Caddis Pupa
Yellow Stonefly	All Month	E to L am L pm to dark	14-16 Yellow Stimulator or Elk Hair Caddis (Yellow) 14-16 Yellow Stone Nymph
Giant Black Stonefly	All Month	E am	4-8 Black Stonefly Nymph
Light Cahill Mayfly (Very Important)	All Month	E to L pm	12-14 Light Cahill 12-14 Light Cahill Nymph
Sulphur Mayfly (Important)	All Month	L pm to dark	14-18 Sulphur Comparadun; Light Cahill; Cream Variant 14-16 Sulphur Nymph or Emerger, Pheasant Tail
Golden Stonefly	Late	E am	4-8 Golden Stonefly Nymph
Brown & Slate Drakes	Late	L am to L pm	8-14 Adams, Blue Dun, or March Brown Parachutes 8-14 March Brown Nymph, Dark Hare's Ear, or Pheasant Tail
Green Drake Mayfly (Important)	Late	L am to L pm	8-10 Green Drake 8-10 Green Drake Nymph
Coffin Fly (Green Drake Spinner) (Awesome)		L pm to an hour after dark	8-10 Spent Wing or Parachute Coffin Fly
Midges	All Month	All Day	18-22 Griffith's Gnat 18-22 Midge Pupa

**Hot tip: Don't leave early. Go late and stay later. Carry a flashlight! Many times the trout won't rise until the sun starts going down and the bugs come out to find a mate.**

'Website-of-the-Month': [http://www.midcurrent.com/flyfishing/top\\_ten\\_flies.aspx](http://www.midcurrent.com/flyfishing/top_ten_flies.aspx)

### Letters To The Rabunites

**Sent:** by US Postal on 3/28/2010

**To:** Rabun TU

Please accept this donation from Georgia Women FlyFishers for the Tom Landreth Memorial Fund Chattooga Stocking Program. Thank you,

**From** Peggy Hart - Georgia Women FlyFishers

**Editor's Notes:** *Thank you for the \$200 donation to Tom's Memorial Fund.* <http://www.georgiaflyfishing.com/>

**Sent:** Thursday, March 25, 2010

**Subject:** Re: TIGHT LINES April 2010 Newsletter

Morning and thanks for the newsletter - always a good read. But really, allowing a Buckeye license plate to be shown? Wonder if he caught that red fish in Lake Erie? Sylvania is "up near the lake" as opposed to southern Ohio known as "down by the river". 🇺🇸 I speak buckeye you know, having grown up there. Actually, someone with a lot of experience in Ohio could make a good chapter speaker giving a talk on how conservation really does work if you look at Lake Erie going from a sewer in

the mid-1960s to a fishery with steelhead, salmon, trout, smallmouth, walleyes and a rapidly recovering lake trout population. It really is a success story that took 50 years to complete.

And in other news, Pisgah Chapter has a new web site, [www.pisgahchapterTU.org](http://www.pisgahchapterTU.org). We are very proud of this and it is far superior to the old site. Tell the folks in Rabun that should they ever decide to venture north of Otto, we would be glad to show them the ropes on the Davidson and some of our streams. Tight Lines!

**From:** John C. Kies – Pisgah (NC) TU Chapter

**Editor's notes:** *Below is the Don Atkinson response*

**Sent:** Thursday, April 08, 2010

**Subject:** Re: TIGHT LINES April 2010 Newsletter

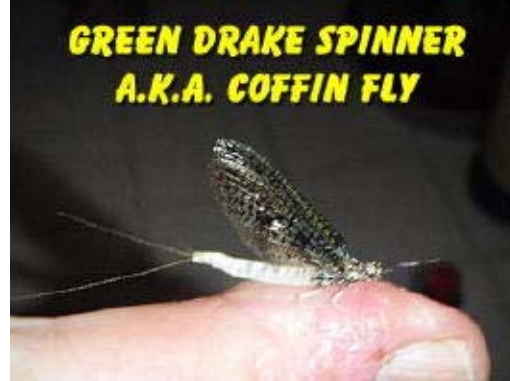
HC, I've never known you, a man of principle, to use live bait but this is very close to it. --- well, maybe crickets once ... no, twice ... Maybe. Sent from woods or river

**From:** Don Atkinson (aka: Cousin Ken) – Sylvania, OH

If you have a comment or an opinion to share in TIGHT LINES, please submit it in 250 words or less to [edadams1@windstream.net](mailto:edadams1@windstream.net)

## Green Drake Time

Each year in May, Southeastern backcountry trout anglers eager await the green drake mayfly hatch.



This giant mayfly will tempt even the cautious and wily brown trout to feed on the surface, - - - and some make mistakes.



Know Your Forest: 11<sup>th</sup> in a series

### Bartram Trail in Rabun County

Excerpts from wikipedia.org & GeorgiaTrails

Bartram Trail is designated a National Recreation Trail and in [\[3\]](#), 4,696 feet, the second-highest point in the state, along the [Eastern Continental Divide](#). From there it passes [Martin Creek Falls](#) and [Becky Branch Falls](#) as it drops to go through [Warwoman Dell](#). From Warwoman Dell, it climbs again before dropping to its lowest elevations along a stretch of the [Wild and Scenic Chattooga River](#). In addition to a number of [waterfalls](#) like Martin Creek Falls and Becky Branch Falls and vistas from Rabun Bald, the Bartram Trail offers a great deal of scenic beauty.

The trail approximates the route of 18th century naturalist and explorer William Bartram through NC, SC, GA, TN, AL, FL, MS and LA. In many places the Bartram Trail is unmarked and poorly maintained or completely obliterated by modern construction.

In North Georgia the portion of the trail that winds through the Chattooga River Ranger District is well maintained. About 37 miles long, this trail retraces a portion of the naturalist's path. Bartram actually traversed a significant portion of North Georgia from Savannah to Ellicott Rock. Just south of the NC border the Bartram Trail crosses Hale Ridge Road, and from there the trail follows a ridge line to its highest point in Georgia at [Rabun Bald](#)

The Georgia portion of the trail is entirely in the [Chattahoochee National Forest](#) and is managed by the [United States Forest Service](#). The southern terminus of the Bartram Trail is at its intersection with [Georgia State Route 28](#) at the [South Carolina](#) state line.

To read more about William Bartram & Bartram Trail, click [http://en.wikipedia.org/wiki/Bartram\\_Trail](http://en.wikipedia.org/wiki/Bartram_Trail) & <http://georgiatrails.com/trails/bartram.html>

#### Some Very Sad News

**Don Eng** passed away 4/11 from his battle with cancer over the past 2 years. Don was a charter member of the Saluda River (SC) Chapter of TU, and the Supervisor for the USFS in SC for nearly 20 years, retiring in 1994.

To read more about Don, click [HERE](#)

### Status Update – Chattooga North Fork Recreation Management Plan

[Forest Service Voluntarily withdraws Decisions on Recreation Uses on Upper Chattooga River](#)

(USFS Regional News Release December 21, 2009)

The decision, which emphasized year-round high-quality trout fishing while providing boating opportunities on the upper Chattooga North Fork, was withdrawn on 12/21/2009 to allow for additional analysis. As a result, the status quo is preserved on the river (meaning no boating is allowed above the Highway 28 bridge) until the forests issue three new decisions, probably in the spring.

## Letter To All GA TUErs

**Sent:** Sunday, March 28, 2010

**Subject:** GA TU and DNR Partnership

**To** all of Trout Unlimited in Georgia:

Please see the below letter from DNR Commissioner Clark. This tract of land is the one we donated money for last September. Our action made a difference and TU got some well-deserved publicity. More important, a beautiful coldwater stream will be available for all to enjoy. Thanks for a job well done.

**From:** Charlie Breithaupt – Chairman, GA TU Council

RE: 469 acres Dawson Forest WMA Tract

Dear Charlie,

This week, the Board of the Department of Natural Resources voted to acquire this very important property within the Dawson Forest WMA. The early support from Trout Unlimited was such an important part of our ability to complete this project. On behalf of the Board and the Governor, I wanted to say thank you for your support and leadership in this effort.

For over 15 years, this tract held by Temple Inland/Forestar, was a priority for acquisition. It was always considered critical because it ties a major portion of the WMA together, and protects both sides of over 2 miles of Amicalola Creek and its tributaries. The Amicalola is a Priority 1 watershed for protection within the Etowah River basin as determined by the US Fish and Wildlife Service (FWS) and University of Georgia. It is also designated as a high priority stream in Georgia's Wildlife Action Plan (2005). Amicalola Creek is one of five major population areas important to the survival of the federally endangered Etowah darter along with twenty-seven native fish found within the property boundaries.

This WMA is also very popular with the public for all types of recreation from hiking and canoeing, to hunting and trout fishing. With this approval and subsequent closing, two key sections of the WMA are now connected taking us closer to a potential link to the Chattahoochee National Forest.

Thanks again for your partnership on this important conservation project.

Sincerely,



Chris Clark

**Editor's Notes:** The GA TU Council donated \$8,000 and the 12 GA Chapters of TU donated another \$12,000 for a total GA TU donation of \$20,000 all towards the purchase and protection of the 469 acre tract known as the Dawson Forest Forestar tract. The 2 miles of Amicalola Creek that passes through the property is lovely trout habitat.

## Letter To The Rabunites

**Sent:** by US Postal on 3/3/2010

**To:** Rabun Chapter of TU

I am writing to thank you for the very generous gift of \$2,000, received February 25, 2010 to Trout Unlimited. It means even more that you thought of us in these difficult economic times.

As specified, \$500 of this gift will go toward supporting Trout Unlimited's Youth Education program; \$500 of this gift will go toward our Southeastern Land Protection project; and, \$1000 will go to our Embrace-A-Stream program. Your support, and that of TU's other members and contributors, provides the crucial core funding for this project. Very simply, we could not do it without you.

Together, we are creating a legacy of cold, clean, fishable water, for us and the next generation.

Again, our most heartfelt thanks.

Sincerely,

**From:** Whit Fosburgh – TU Vice President for Program Development



## "Catchin' Corner" - Troutng Tips

The following article is reprinted with permission from the Fly Shack Newsletter <http://www.flyshack.com/>

### Fish Rise But Ignore Your Dries? A Solution Emerges

You arrive at the water's edge, scan the surface of the pool before you and see the sight you've been looking forward to all week, or maybe all winter: spreading concentric rings, unmistakable evidence of trout feeding at the surface.

You see the newly hatched mayflies sitting on the river, floating slowly downstream as they make ready to take flight. You expected them to be here and came prepared with the dry fly patterns that imitate them perfectly.

You spot a riser within range, ascertain its rhythm, then cast and gently drop your fly where it will drift directly over the feeding trout. But no fish breaks the mirror-like surface to take the fly - on this drift, or the next or the next. Frustration and bewilderment begin to rise as your fly is ignored while the rises continue all around it.

Welcome to the fascinating but sometimes maddening world of emergers - mayflies, caddis flies or midges struggling in or just below the surface film to break out of their nymph shucks, unfold their wings and legs and start their new lives as winged insects.

There's no more vulnerable stage of an aquatic insect's life. A nymph or pupa swimming to the surface has at least some mobility; some nymphs, in fact, are very good swimmers. After metamorphosing into a winged insect, the fly can take flight and leave the stream altogether (although its problem then becomes birds and bats.) But in the stage in between nymph/pupa and winged fly, bugs are obviously helpless, unable to flee and therefore highly attractive prey for trout.

The good news is that many great patterns have been developed to imitate emergers, so when your dry flies aren't getting the job done, you have lots of options.

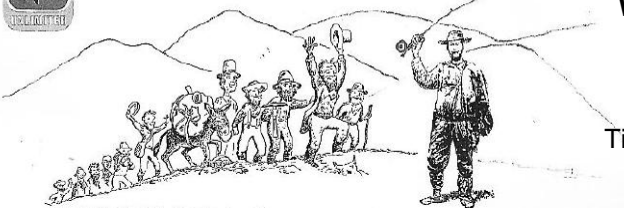
Soft-hackle and winged wet flies have been used to catch trout in Europe and Asia for centuries. The people who tied them may not have thought of these patterns as emergers, but that's probably what trout took them for. They still work today. Such patterns as the Leadwing Coachman, Light Cahill Wet, Blue Dun,

Black Gnat or Partridge and Green hang in or near the surface film and give the impression of a newly released wing and a bunch of legs, tails and antennae waving and wiggling. Select a fly about the size and color of the adult insects you see on the water, and you stand a good chance of hooking up. But be open-minded about color. Many light-colored mayflies have dark brown bodies as nymphs, and that nymphal shuck may be what the trout have come to expect their lunch to look like. A wet fly with a body of peacock herl or pheasant tail can be a dead ringer for a fly that's yet to shed its shuck.

Modern anglers have devised emergers to meet their needs on the stream. The late Gary LaFontaine's Sparkle Pupa has fooled countless trout, with its veil of trilobal Antron yarn suggesting the bubble of gases found on caddis pupa headed for the surface. The RS2 is a simple mayfly emerger pattern that was developed for the fussy, hard-fished trout of Colorado. The Klinkhamer special is a sort of half-wet, half-dry fly - its rear end hangs in the water like the abdomen of an emerger, while its parachute hackle sits flat on the surface and its wing sticks up in the air.

These and many other emerger patterns are worth a try when trout are feeding at the surface but uninterested in dry flies. But if you're still not getting strikes, try a floating or shallow-sinking nymph. Standard patterns such as the Gold-Ribbed Hare's Ear or Pheasant Tail can be as effective at the surface as they are down deep. Naturally, you'll want to have a few without bead heads or other added weight for this kind of work.

Remember that trout are facing upstream watching for emergers that come drifting to them with the current. You should strive for a natural dead-drift, just as you would with a dry fly or nymph. But you should also feel free to fish your wet or damp emerger pattern downstream on the swing. This technique fooled lots of large, wild browns in Izaak Walton's England. It just goes to show that while the trout make the rules, they don't always obey them.



Rabun Chapter of Trout Unlimited

### Custom Fly Rod & Sage Reel Raffle

**Winston 9', 4 piece, 4 weight, BII-MX Boron/Graphite fly rod plus a Sage 2050 reel  
Over \$1,000 Retail Value!!**

Drawing on July 20<sup>th</sup> at the **Annual Summer Family Picnic**  
Tickets are \$3 each or 4 for \$10; Contact Pat Hopton for Tickets

Ph 706 782 4978 E-mail [scotts\\_creek58@yahoo.com](mailto:scotts_creek58@yahoo.com)

**Our good friend Mack Martin of Atlanta Fly Fishing School and North Georgia Custom Rods has donated this fly rod and reel to Rabun TU.** <http://www.mackmartin.com/CustomRods.htm>

### New Rabun TU Website Design is Underway



The Social Media Committee consisting of Chapter VP Pat Hopton, Director Jeff Durniak and Director Kathy Breithaupt) presented to the Board of Directors (BOD) the procedure and results of the solicitation for creating a new web site for the Chapter. Out of the 4 bids received, the Committee recommended the Chapter award the job to Allison Adams. After some discussion, the BOD agreed (with Doug abstaining) with the recommendation.

Again for those that were not there, it should be made clear that there was absolutely no favoritism made in selecting a winning proposal. Each of the three Committee members gave Allison the highest ranking - we were all in agreement that she had the best combination of skills, knowledge, abilities, and price. The BOD had all the bids and rankings presented to them and they were also in agreement with our recommendation.

Allison has submitted a contract, it has been accepted and design is underway.

## Fishing Report

**Sent:** Thursday, March 25, 2010

**Subject:** Fishin' Yesterday,

Sandy and I went surf fishing on Amelia Island and caught 20 nice whiting in two hours. Today, we took the marsh boat and went up a Florida river. I caught a 26" red drum and ten minutes later Sandy caught a 27" red drum. In Florida you can only keep one legal redfish per day...so, we got our limit. The maximum size you can keep is 27" so we got the largest possible keepers. Two great days fishing. Attached are some photos of the reds.

**From:** Ralph Morgan – a Rabunite, St. Marys, GA



### “BACKCASTING”

**Apr 3 (Sat) Rabunite 101 - Rabun TU's 5<sup>th</sup> Fly Fishing Seminar for Adults:** The 20 participants divided into 4 groups of 5 each which rotate to 4 stations to receive expert 1-hour instructions from local TU members in casting, knot tying, entomology and equipment. A basic book about the sport and a cookout after classes were included in the \$30 fee for the half-day seminar. Sheila Humphrey, GA DNR wildlife interpretive specialist at Smithgall Woods, taught the classes on entomology, and her husband Dave, a Federation of Fly Fishers certified instructor, was the lead casting instructor. More than 25 volunteers from the Rabun TU Chapter participated by teaching knot tying, equipment and serving lunch to the participants.

Report filed by Rabunites Kathy & Charlie Breithaupt, the seminar organizers.



Rabunites Doug Adams and Patrick Hopton demonstrate equipment needs to a group of 5 while Jeff Reeves and his dad, Lewis Reeves Jr., practice casting with Rabunite instructor Frank Tolbert. An entomology group is on the stage in the background.

**Apr 10 (Sat) Fly Fishing For Vets** – 4 Rabunites attended this wonderful event for our wounded warriors and their families.

**Apr 20 (Tues) Chapter Meeting** - 29 folks attended. **Kyle Burrell**, professional trout fishing guide and a Rabunite, presented an entertaining PowerPoint program full of stories, fishing tips, and pictures of awesome trout caught in the Pinedale WY area. Kyle will be guiding there from early July through mid-September. To contact Kyle, E-mail [fishwithkyle@yahoo.com](mailto:fishwithkyle@yahoo.com). **The Meeting Raffle** had 8 bucket items and raised \$65 to be used toward the cost of mailing newsletters to members without E-mail and for the meeting hospitality expenses. Thanks to Terry Rivers for handling meeting raffles. A BIG “Thank You” goes to all the Rabunites who donated the items and to everyone who purchased raffle tickets.





**Apr 23-24 (Fri-Sat) Rabun TU's Campout Fri Night with Workday Sat Morning for BtB.** 8 people camped out on Moccasin Creek on Friday night. All members cooked on the grill and enjoyed time around the campfire, entertained by Nugget Nixon. All was well until rain started at around 3 am. Light rain continued until we ate breakfast and then let up. Alex Watson, Conservation Chairman for GA Back-the-Brookie ate dinner and then returned the next morning to work on the project. USFS and other TUs showed up around 9:00 AM Saturday morning - 17 Participants (6 USFS & 11 TUs). Mike Brod and David Vinson led the project, brought tools and four fire fighters from Oregon. They were excellent help and provided needed muscle to move the huge log we put in place. Three other TU chapters participated in the project, including Kanooka, Cohutta, and the Upper Chattahoochee. Seven Rabun members participated in the event. Truvy and Charlie Brown were official camp dogs.



The group constructed a dam that constricted the flow to one side of the bank and then placed a cover log below a root wad, providing both depth and cover for the brook trout in the stream. Excellent project, with fair participation from chapter and other chapters from the Georgia Council. We dodged the weather bullet, but when we returned to camp for lunch, the bottom fell out and did not let up until Sunday. All in all a successful project. The weather probably was the reason we lacked better participation. Report filed by Jim Kidd, Rabun TU project coordinator.

**Apr 27 (Tues) BOD Meeting** An E-meeting was conducted and agenda items included: Recaps – Rabunite 101 Fly Fishing Seminar for Adults; Campout & Workday with USFS Status Updates – Mentoring at Rabun County Middle School; Funds for Josh Seehorn's Research at UGA; Plans for 2010 Stekoa Creek Clean-up Day on 6/26; Redesign Website; 2010 Rod Raffle; CRTUC Pre-Meeting MENTORING PROGRAM; Call for Chapter Members to "step-up"; LWCF; Outreach to Scouts for Merit Badges & Stream Explorer Members; Membership; Recruit & Retention Plan(s); Chapter Lending Library News; October Campout reservations. Upcoming – 5/1 Oconee River TU Chapter Fundraiser; 5/12 – 5/16 Spring Camping & Fishing; 5/14 & 5/15 SE Regional Rally; 5/15 High Country Boil Fundraiser for Blue Ridge Mountain TU Chapter; 5/17 Annual Spring Family Cookout with Scouts; 5/29 Betty Creek In-Stream Trimming/Clean-up; 5/25 BOD Meeting location; 6/15 Chapter Meeting Program. New Business – Request from Rabun Co 4-H Club for donation; 2011 Rendezvous planning; Chattooga Fish Sampling 7/13 & 14, Foxfire Mountaineer Festival 10/2. Reports – Publicity; Membership; Treasury Report.

## THANK YOU

**Georgia Women FlyFishers** for your donation to the Tom Landreth Memorial Fund at Rabun TU.  
All donations to Rabun TU (a Federal Tax Exempt 501(c)3 non-profit) are tax deductible.

## MEMBERSHIP NEWS

Congratulations to **David Cannon**. The Georgia Outdoor Writers Association recognized David's book through a first-place win in their annual Excellence In Craft Competition in the Outdoor Books category. Click [HERE](#)

We wish **Bill Kelly** a speedy recovery after his recent hospitalization.

We wish **Terry Rivers** a speedy recovery from recent reaction to meds.

We extend condolences to **Charlie & Kathy Breithaupt** in the passing of his 14-year faithful and loving pet, **Rooker**.

## MEMBERSHIP UPDATE

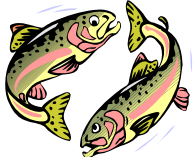
A Big Rabunite "WELCOME" to **2 new members** this month: **KYLE ENGLISH**, 6218 HUNTCLIFF DRIVE, FLOWERY BRANCH GA 30542 and **HOWELL FREEMAN**, 4425 SPRING CREEK ROAD, MONTEVALLO AL 35115

Thanks for re-upping: **Bill Archer, Max Gates, Ray Kearns, Allen Koleff, Charles Mobley, Perry Thompson, Russ Tyre, Stephen Weinelt, Broderick Crawford, John Patrick, Ray Hannah, Hal Howard, Avril Adams, Calder Adams, & Pat Gorman**

It is time to renew your membership: **Matthew Calvin, Will Pendrey, Tom Shirley, John Eaves, John Harrison, Pam Harrison, John Rumsey, Bill Thompson, Bob Biebel, Warren Stiles, & Chris Sawers.**

## Rabun TU Officers & Directors for F/Y2010

<b>President – Larry Walker</b> (w/Media, Awards & Budget) POB 371, Clayton, GA 30525	Ph 706 244 4345	E-mail <a href="mailto:amosndixie@windstream.net">amosndixie@windstream.net</a>
<b>Vice President - Pat Hopton</b> (w/ Website & Youth outreach)	Ph 706 782 4978	E-mail <a href="mailto:scotts_creek58@yahoo.com">scotts_creek58@yahoo.com</a>
<b>Treasurer - Doug Adams</b> (w/Newsletter, BOD Agenda, Rendezvous, Reports & Budgets)	Ph 706 746 2158	E-mail <a href="mailto:edadams1@windstream.net">edadams1@windstream.net</a>
<b>Secretary - Ray Gentry</b> (w/Communications & Scouts fishing event)	Ph 404 680 6736	E-mail <a href="mailto:regentry@windstream.net">regentry@windstream.net</a>
<b>Past President - Jimmy Whiten</b> (w/Dream Trip Raffle)	Ph 706 886 6546	E-mail <a href="mailto:jimmywhiten@yahoo.com">jimmywhiten@yahoo.com</a>
<b>Director thru F/Y 2010: Ray Kearns</b> (w/Mtg refreshments)	Ph 706 782 9913	E-mail <a href="mailto:raykearns@windstream.net">raykearns@windstream.net</a>
<b>Director thru F/Y 2010: Bill Kelly</b> (w/Mtg Programs & Picnic)	Ph 706 746 2104	E-mail <a href="mailto:bkjk1@windstream.net">bkjk1@windstream.net</a>
<b>Director thru F/Y 2011: Kathy Breithaupt</b> (w/ 101, & Nametags)	Ph 706 782 6954	E-mail <a href="mailto:knc615@windstream.net">knc615@windstream.net</a>
<b>Director thru F/Y 2011: Charlie Breithaupt</b> (w/Member, 101, Library & Mtg host)	Ph 706 782 6954	E-mail <a href="mailto:knc615@windstream.net">knc615@windstream.net</a>
<b>Director thru F/Y 2012: Jim Kidd</b> (w/Instream projects & Scouts M/B)	Ph 706 782 2474	E-mail <a href="mailto:Jikidd@windstream.net">Jikidd@windstream.net</a>
<b>Director thru F/Y 2012: Terry Rivers</b> (w/Festivals, BTB, Campout Equip & Mtg Raffles)	Ph 706 782 7419	E-mail <a href="mailto:tr1121@windstream.net">tr1121@windstream.net</a>
<b>Director thru F/Y 2013: Tony Allred</b> (w/Rendezvous & Membership retention)	Ph 706 746 3892	E-mail <a href="mailto:taallred@windstream.net">taallred@windstream.net</a>
<b>Director thru F/Y 2013: Jeff Durniak</b>	Ph 706 892 6576	



## Letter From The Chapter President

Fellow Rabunites,

It's spring! Over the past few weeks, I've observed many people taking advantage of our cold waters. Around spring break, campgrounds along Sarah's and Warwoman Creeks were full. The streams were lined with people, adults taking advantage of our GA DNR's stocking program. Lots of smiles were seen.

Many of the campers and fish seekers were kids. I'll bet most of you who are reading this, were as excited as those kids when you got your first few chances to camp and catch trout. That type of camping and fishing may not appeal to you today because of the crowds, but please don't criticize it. Just remember how great it is for the kids.

On another matter, our Spring work projects began. Jim Kidd led a successful project in cooperation with USFS and GA DNR folks to add to the stream habitat restoration work for brook trout in the North Fork of Moccasin Creek.

We have our annual Scouts fishing and picnic event coming up on May 17 at Indian Lake on the RGNS property, some fishing events for middle schoolers at Rabun County Middle School and a chapter campout and fishing outing at Cherry Hill campground on the SC side of the Chattooga River.

Lots to do this month. Hope you'll join us for some of the fun times.

Regards, *Larry*

P.S. Oh yeah, I did get in a little fishing in my favorite river a few days ago. Water's up, but fishing (and catching) was great.

For more pictures, info, and back issues of TIGHT LINES, visit the Rabun TU website: <http://www.rabuntu.com/>

Georgia TU Council website: <http://georgiatu.org/> & National TU Website:

<http://www.tu.org/site/c.kkLRJ7MSKtH/b.3022897/k.BF82/Home.htm>

We would love getting your "Letters to the Editor", suggestions, stories, articles, and questions for our panel of experts, or your comments about our Website and Newsletter.

Send them to: [edadams1@windstream.net](mailto:edadams1@windstream.net) or to: Rabun TU, PO Box 65, Rabun Gap, GA 30568

Please tell us if you have E-mail, it will save the chapter \$1.28 per newsletter mailed:

E-Mail [edadams1@windstream.net](mailto:edadams1@windstream.net)

RABUN CHAPTER of TROUT UNLIMITED

PO BOX 371

CLAYTON, GA 30525